

**Instant glance**  
of thermo. image!

**So small**  
it fits to your pocket!

**Just press**  
to check temp.!



Feel more familiar to thermal image

This thermal image sensor is available to use not only as an industrial application but also at various situations!

## Easy Thermo

Now, its time to SEE the temperature...

**CHINO**

## Applications

It is useful at various situations of temperature measuring.

Temperature check of building structures



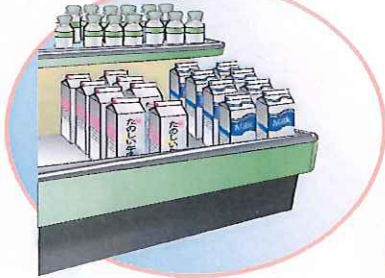
Safety and maintenance



Temperature monitoring at server room



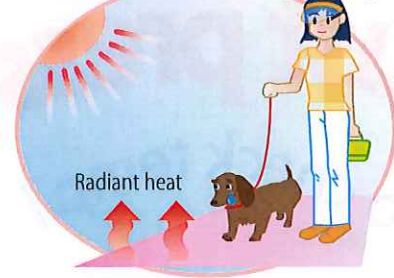
Refrigeration shelves



Health and beauty maintenance

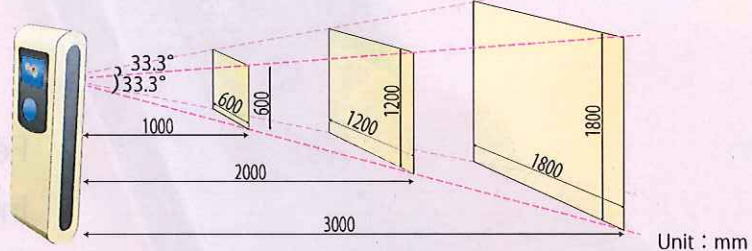


Health maintenance for your pets



## Measurement View angle

33.3° × 33.3°  
Minimum measuring distance : 350mm



## Specifications

|                             |  |
|-----------------------------|--|
| Model                       | TP-S   |
| Temperature Measuring range | -10 to 180°C   |
| Detecting element           | Thermopile (2000 pixels)                               |
| Temperature resolution      | 0.5°C  |
| Accuracy ratings            | ±2% of measured value or ±3°C, whichever is greater    |
| Frame rate                  | 6Hz  |
| Measuring display Function  | Spot temperature display 1 point (Fixed at the center) |
| Power supply                | AA battery x 2   |

|                           |   |
|---------------------------|---|
| Auto power OFF            | Approx. 5 min.  |
| Battery                   | Approx. 2 hr. (when using "Eneloop" or rechargeable NiMH battery) |
| Working Temperature range | 0 to 50°C (Storage temperature -20 to 55°C)                       |
| Working humidity range    | 10 to 80%RH (no dew condensation)                                 |
| Weight                    | 180g (including batteries)  |
| External dimensions       | W50 x H138 x D39 (including lens)                                 |
| Case material             | ABS resin (antibacterial)   |

\* To prolong battery life, NiMH (nickel hydride rechargeable battery) is recommended for use.

Company names and product names described in this document are trademarks or registered trademarks of their respective companies.

# CHINO

KUMANO-CHO 32-8, ITABASHI-KU, TOKYO 173-8632  
TEL.+81-3-3956-2171 FAX.+81-3-3956-0915