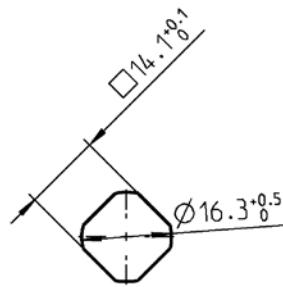
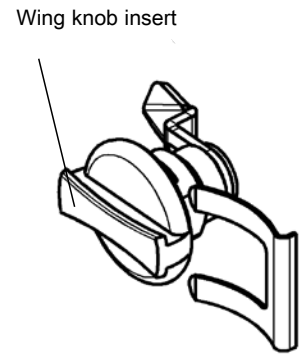
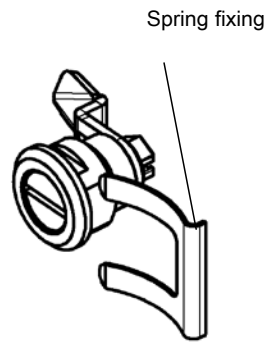
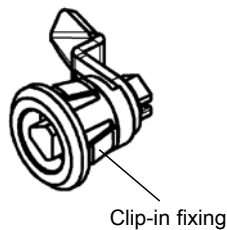
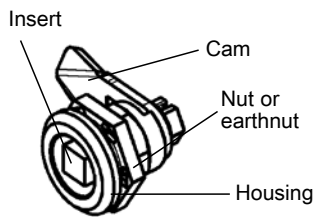
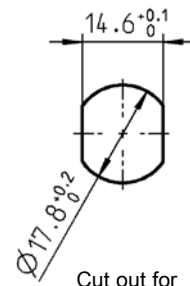


Quarter turn, small version

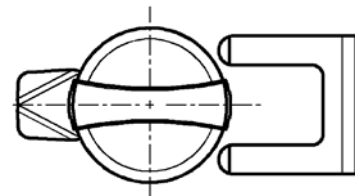
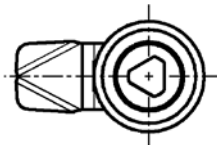
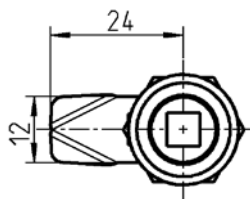
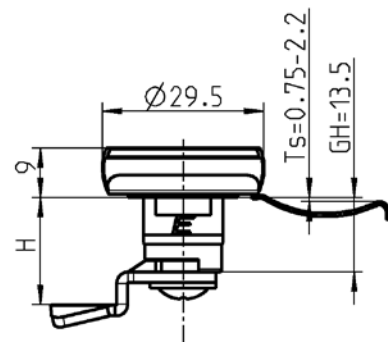
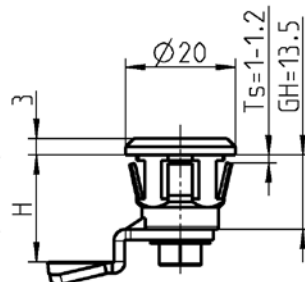
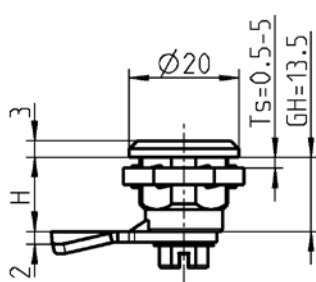
PROGRAM 1022



Cut out for nut and clip-in fixing



Cut out for spring fixing



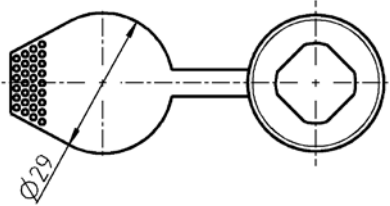
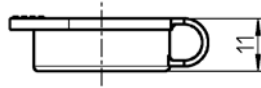
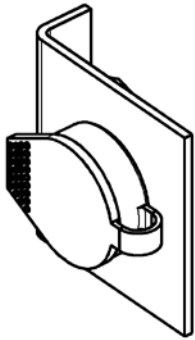
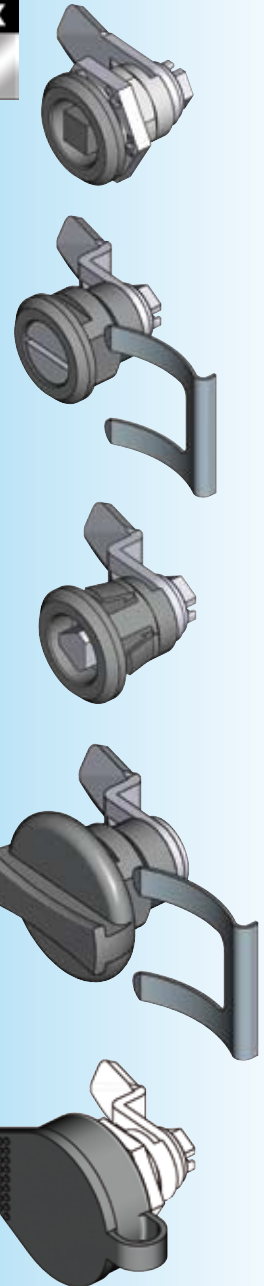
Housing zinc die, PA or stainl. st.; nut or spring fixing m.s. zinc plated or stainless steel; with seal (only for stainless steel Version)

	Zinc die chrome plated	Zinc die black powder coated	Stainless steel AISI 303	Polyamide black	
with nut ¹⁾ m.s. ²⁾ AISI 303	1022-U8 ¹⁾	1022-U46 ¹⁾	1022-U60 ²⁾	1022-U71 ¹⁾	
with earthnut m.s.	1022-U9	1022-U47	-	-	
Clip-in fixing	-	-	-	1022-01-02	
with spring fixing	1022-U76	1022-U77	-	1022-U78	
Insert zinc die, Polyamide or stainless steel; fixing material m.s. zinc plated; with seal (only for stainless steel version)					Key zinc die black
Square 6	1022-U2	1022-U44	1022-U61	1022-U72	1004-20
Triangular 6.5	1022-U1	1022-U43	1022-U62	1022-U73	1004-21
Slot 1.5 x 3	1022-U3	1022-U45	1022-U63	1022-U74	-
Blind plug	1022-U4	-	1022-U64	1022-U75	-
Wing knob insert	-	-	-	1022-U82	-

Accessories



INOX
AISI
3..



Attention:
Not suitable for housings with spring or clip-in fixing.

Cam on choice, t = 2

	m.s. zinc plated	AISI 304
H = 7,5	1022-20	1022-20-PC
13,5	1022-07	1022-07-PC
19,5	1022-08	1022-08-PC

IP 65 with:

- O-ring (included in case of stainless steel Version)		1022-09
- flat seal (only for screw-on housing, included in case of stainless steel version)		1022-10

Assembly on request

without O-ring		1022-990
with O-ring		1022-991

Accessories

Dust cap polyethylene black		1022-23-01
-----------------------------	--	------------

Attention:
By using the dust cap 1022-23-01 dimension H will be reduced by 2 mm
Not suitable for housings with spring or clip-in fixing

Application area:
Small doors and panels