



STORAGE DESIGN LIMITED

Storage Bins & Accessories



**Storage Design Ltd
Primrose Hill, Cowbridge
South Wales, CF71 7DU**

Tel. 01446 772614

Fax. 01446 774770

Email: info@storage-design.co.uk

www.storage-design.co.uk



Storage Bins & Accessories

Size 1 Storage Bins (Pack/50) 53H x 105W x 88D mm

Industrial quality stackable boxes made of acid, oil and solvent proof thermoplastic material. Suitable for use from -40° to +80°C. All bins feature flat bottoms for inclined planes and smooth inner walls for easier cleaning. A moulded in rear lip is provided for hanging on louvred panels or trolleys.



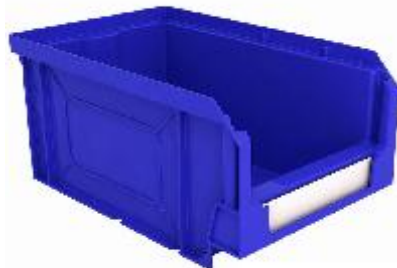
- A simple and effective solution for the storage of small sized parts
- Pack of 50 heavy duty, open fronted storage bins, manufactured in Italy from high density polyethylene
- Bin dimensions 53mm high x 105mm wide x 88mm deep
- Integral label holder for contents (labels included with the bins)
- Bins are stackable or can be hung from louvred wall panels - available separately
- 6 different sizes available

Colour	Select
Dimensions (mm)	53H x 105W x 88D
Unit of sale	Pack/50

Order Code	Colour
GC011401	Blue
GC011404	Green
GC011501	Grey
GC011402	Red
GC011403	Yellow

Size 2 Storage Bins (Pack/48) 75H x 105W x 160D mm

Industrial quality stackable boxes made of acid, oil and solvent proof thermoplastic material. Suitable for use from -40° to +80°C. All bins feature flat bottoms for inclined planes and smooth inner walls for easier cleaning. A moulded in rear lip is provided for hanging on louvred panels or trolleys.



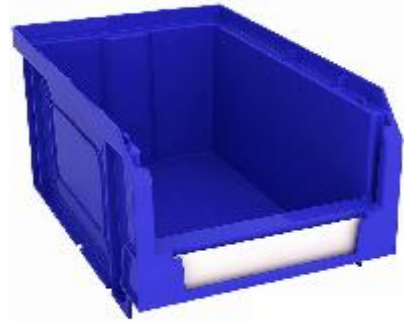
- A simple and effective solution for the storage of small sized parts
- Pack of 48 heavy duty, open fronted storage bins, manufactured in Italy from high density polyethylene
- Bin dimensions 75mm high x 105mm wide x 160mm deep
- Integral label holder for contents (labels included with the bins)
- Bins are stackable or can be hung from louvred wall panels - available separately
- 6 different sizes available

Colour	Select
Dimensions (mm)	75H x 105W x 160D
Unit of sale	Pack/48

Order Code	Colour
GC011405	Blue
GC011408	Green
GC011502	Grey
GC011406	Red
GC011407	Yellow

Size 3 Storage Bins (Pack/38) 120H x 144W x 235D mm

Industrial quality stackable boxes made of acid, oil and solvent proof thermoplastic material. Suitable for use from -40° to +80°C. All bins feature flat bottoms for inclined planes and smooth inner walls for easier cleaning. A moulded in rear lip is provided for hanging on louvred panels or trolleys.



- A simple and effective solution for the storage of medium sized parts
- Pack of 38 heavy duty, open fronted storage bins, manufactured in Italy from high density polyethylene
- Bin dimensions 120mm high x 144mm wide x 235mm deep
- Integral label holder for contents (labels included with the bins)
- Bins are stackable or can be hung from louvred wall panels - available separately
- 6 different sizes available

Colour	Select
Dimensions (mm)	120H x 144W x 235D
Unit of sale	Pack/38

Order Code	Colour
GC011409	Blue
GC011412	Green
GC011503	Grey
GC011410	Red
GC011411	Yellow

Dividers to suit sizes 4 & 4D bins (pack of 4)

Pack of 4 dividers to suit bin sizes 4 and 4D.

- Size 4 bins can accept a single divider separating the bin into two equal width compartments.
- Size 4D bins can accept up to 3 dividers separating the bin into two, three or four compartments.



Colour	Black
Unit of sale	Pack of 4

Order Code
GC011598



Size 4 Storage Bins (Pack/20) 163H x 205W x 345D mm

Industrial quality stackable boxes made of acid, oil and solvent proof thermoplastic material. Suitable for use from -40° to +80°C. All bins feature flat bottoms for inclined planes and smooth inner walls for easier cleaning. A moulded in rear lip is provided for hanging on louvred panels or trolleys.



- A simple and effective solution for the storage of medium to large sized parts
- Pack of 20 heavy duty, open fronted storage bins, manufactured in Italy from high density polyethylene
- Bin dimensions 163mm high x 205mm wide x 345mm deep
- Integral label holder for contents (labels included with the bins)
- Bins are stackable or can be hung from louvred wall panels - available separately
- 6 different sizes available

Can be subdivided into two equal width compartments using dividers - available separately

Colour	Select
Dimensions (mm)	163H x 205W x 345D
Unit of sale	Pack/20

Order Code	Colour
GC011413	Blue
GC011416	Green
GC011504	Grey
GC011414	Red
GC011415	Yellow

Size 4D Storage Bins (Pack/8) 163H x 410W x 345D mm

Industrial quality stackable boxes made of acid, oil and solvent proof thermoplastic material. Suitable for use from -40° to +80°C. All bins feature flat bottoms for inclined planes and smooth inner walls for easier cleaning. A moulded in rear lip is provided for hanging on louvred panels or trolleys.



- A simple and effective solution for the storage of medium to large sized parts
- Pack of 8 heavy duty, open fronted storage bins, manufactured in Italy from high density polyethylene
- Bin dimensions 163mm high x 410mm wide x 345mm deep
- Integral label holder for contents (labels included with the bins)
- Bins are stackable or can be hung from louvred wall panels - available separately
- 6 different sizes available

Up to 3 dividers can be used to subdivide the bin - available separately

Colour	Select
Dimensions (mm)	163H x 410W x 345D
Unit of sale	Pack/8

Order Code	Colour
GC011417	Blue
GC011420	Green
GC011505	Grey
GC011418	Red
GC011419	Yellow

Dividers to suit size 5 bins (pack of 4)

Pack of 4 dividers to suit size 5 bins.

- Size 5 bins can accept a single divider separating the bin into two equal width compartments.



Colour	Black
Unit of sale	Pack of 4

Order Code
GC011599



Storage Bins & Accessories

Size 5 Storage Bins (Pack/12) 189H x 298W x 485D mm

Industrial quality stackable boxes made of acid, oil and solvent proof thermoplastic material. Suitable for use from -40° to +80°C. All bins feature flat bottoms for inclined planes and smooth inner walls for easier cleaning.



- A simple and effective solution for the storage of large sized parts
- Pack of 12 heavy duty, open fronted storage bins, manufactured in Italy from high density polyethylene
- Bin dimensions 189mm high x 298mm wide x 485mm deep
- Integral label holder for contents (labels included with the bins)
- Bins are stackable or can be hung from louvred wall panels - available separately
- 6 different sizes available

Can be subdivided into two equal width compartments using dividers - available separately

Colour	Select
Dimensions (mm)	189H x 298W x 485D
Unit of sale	Pack/12

Order Code	Colour
GC011421	Blue
GC011424	Green
GC011506	Grey
GC011422	Red
GC011423	Yellow

Size 2 Mixed Colour (Pack/48)

- A simple and effective solution for the storage of small sized parts
- Pack of 48 heavy duty, open fronted storage bins, manufactured in Italy from high density polyethylene
- Bin dimensions 75mm high x 105mm wide x 160mm deep
- Integral label holder for contents (labels included with the bins)
- 4 colours in the pack (colours may vary)
- Bins are stackable or can be hung from louvred wall panels - available separately



Colour	Mixed (colours may vary)
Dimensions (mm)	75H x 105W x 160D
Unit of sale	Kit

Order Code
GC011804

Size 3 Mixed Colour (Pack/36)

- A simple and effective solution for the storage of small to medium sized parts
- Pack of 36 heavy duty, open fronted storage bins, manufactured in Italy from high density polyethylene
- Bin dimensions 120mm high x 144mm wide x 235mm deep
- Integral label holder for contents (labels included with the bins)
- 4 colours in the pack (colours may vary)
- Bins are stackable or can be hung from louvred wall panels - available separately



Colour	Mixed (colours may vary)
Dimensions (mm)	120H x 144W x 235D
Unit of sale	Kit

Order Code
GC011803

Size 4 Mixed Colour (Pack/20)

- A simple and effective solution for the storage of medium to large sized parts
- Pack of 20 heavy duty, open fronted storage bins, manufactured in Italy from high density polyethylene
- Bin dimensions 163mm high x 205mm wide x 345mm deep
- Integral label holder for contents (labels included with the bins)
- 4 colours in the pack (colours may vary)
- Bins are stackable or can be hung from louvred wall panels - available separately



Colour	Mixed (colours may vary)
Dimensions (mm)	163H x 205W x 345D
Unit of sale	Kit

Order Code
GC011801



Size 4D Mixed Colour (Pack/8)

- A simple and effective solution for the storage of medium to large sized parts
- Pack of 8 heavy duty, open fronted storage bins, manufactured in Italy from high density polyethylene
- Bin dimensions 163mm high x 410mm wide x 345mm deep
- Integral label holder for contents (labels included with the bins)
- 4 colours in the pack (colours may vary)
- Bins are stackable or can be hung from louvred wall panels - available separately



Colour	Mixed (colours may vary)
Dimensions (mm)	163H x 410W x 345D
Unit of sale	Kit

Order Code

GC011802

Budget P&B Kit with 36 mixed bins 800H x 680W mm

- A simple and effective solution for small parts storage
- Heavy duty bins manufactured in Italy from high density polyethylene
- 24 x size 2 bins. Dimensions: 82mm high x 105mm wide x 167mm deep
- 12 x size 3 bins. Dimensions: 123mm high x 144mm wide x 237mm deep
- Integral label holder for contents (labels included with the kit)
- 4 x robust plastic louvred panels manufactured in Italy
- Dimensions: 400mm high x 340mm wide (each panel)



Colour	Mixed (colours may vary)
Dimensions (mm)	800H x 640W x 237D mm (can also be assembled as 4 separate panels, each 400H x 340Wmm)
Unit of sale	Kit

Order Code

GC012010

P&B Kit with 27 x No.3 Bins 1350H x 500W mm

- A simple and effective solution for small parts storage
- Heavy duty bins manufactured in Italy from high density polyethylene
- 27 x Size 3 bins. Bin dimensions: 120mm high x 144mm wide x 235mm deep
- Integral label holder for contents (labels included with the kit)
- 3x steel louvred panels manufactured in the UK to high specifications
- 1.2mm thick first grade steel. Powder coated Blue (RAL 5017)
- Each panel measures 450mm high x 500mm wide



Colour	Mixed (colours may vary)
Dimensions (mm)	1350H x 500W x 240D mm (can also be assembled as 3 separate 450mm high panels)
Unit of sale	Kit

Order Code

GC012001

P&B Kit with 29 mixed bins 1350H x 500W mm

- A simple and effective solution for small parts storage
- Heavy duty bins manufactured in Italy from high density polyethylene
- 16 x Size 2 bins. Bin dimensions: 75mm high x 105mm wide x 160mm deep
- 9 x Size 3 bins. Bin dimensions: 120mm high x 144mm wide x 235mm deep
- 4 x Size 4 bins. Bin dimensions: 163mm high x 205mm wide x 345mm deep
- Integral label holder for contents (labels included with the kit)
- 3x steel louvred panels manufactured in the UK to high specifications
- 1.2mm thick first grade steel. Powder coated Blue (RAL 5017)
- Each panel measures 450mm high x 500mm wide



Colour	Mixed (colours may vary)
Dimensions (mm)	1350H x 500W x 240D mm (can also be assembled as 3 separate 450mm high panels)
Unit of sale	Kit

Order Code

GC012002



Storage Bins & Accessories

P&B Kit with 16 x No.4 Bins 900H x 1000W mm



- A simple and effective solution for small parts storage
- Heavy duty bins manufactured in Italy from high density polyethylene
- 16 x Size 4 bins. Bin dimensions: 163mm high x 205mm wide x 345mm deep
- Integral label holder for contents (labels included with the kit)
- 4x steel louvred panels manufactured in the UK to high specifications
- 1.2mm thick first grade steel. Powder coated Blue (RAL 5017)
- Each panel measures 450mm high x 500mm wide

Colour	Mixed (colours may vary)
Dimensions (mm)	900H x 1000W x 350D mm (can also be assembled as 4 separate 450mm high panels)
Unit of sale	Kit
Order Code	
GC012003	

Store-Rite® Louvred Racks & Trolleys - Kit your own



Store-Rite® Free-standing Louvred Racks and Mobile Trolleys

Free-standing racks are Ideal for use in central warehouses, workshops and heavy duty retail locations. The trolleys are ideal for use where you need to move your

components to your workstation. These units are supplied empty for use with your own selection of bins.

All models feature:

- Tough, double sided steel construction.
- Powder coated light grey frames and panels (blue panels available on request - please call for availability)

Racks:

- Racks available as full height 1570 mm and low level 1100 mm.
- Can be used as work area separators.
- Levelling feet supplied.
- Supplied in starter / add-on bay format (add-on racks connect to starter racks to create longer runs)

Trolley:

- Trolley has a height of 1300mm
- Comfort grip push/pull handle
- Supplied with 4 castors; two fixed, two swivel (one with brake)

A number of pre-selected kitted models are also available.

Colour	Light grey RAL 7035 (option for blue RAL 5017 panels)
Dimensions (mm)	Rack as 1100/1570H x 1000W x 600D. Trolley 1300H x 1000W x 600D
Unit of sale	Each

Order Code	Colour	Model
GC011913	Light Grey RAL 7035	Trolley
GC011909	Light Grey RAL 7035	Starter Rack - 1100mm
GC011910	Light Grey RAL 7035	Add-on Rack - 1100mm
GC011901	Light Grey RAL 7035	Starter Rack - 1570mm
GC011902	Light Grey RAL 7035	Add-on Rack - 1570mm



Store-Rite® Louvred Rack 1570H mm - Model A

Store-Rite® Free-standing Louvred Rack - Model A

Free-standing racks are Ideal for use in central warehouses, workshops and heavy duty retail locations. Kitted with 108 x size 3 storage bins.

- 1570H x 1000W x 600D mm.
- Tough, double sided steel construction.
- Powder coated light grey frames and panels (blue panels available on request - please call for availability)
- Supplied with 108x size 3 bins - each 120H x 144W x 235D mm
- Can be used as a work area separator.
- Levelling feet supplied.
- Supplied in starter / add-on bay format (add-on racks connect to starter racks to create longer runs)



Colour	Light grey RAL 7035 (option for blue RAL 5017 panels)
Dimensions (mm)	1570H x 1000W x 600D
Unit of sale	Each

Order Code	Colour	Model
GC011903	Light Grey RAL 7035	Starter Rack
GC011904	Light Grey RAL 7035	Add-on Rack

Store-Rite® Louvred Rack 1570H mm - Model B

Store-Rite® Free-standing Louvred Rack - Model B

Free-standing racks are Ideal for use in central warehouses, workshops and heavy duty retail locations. Kitted with 56 x size 4 storage bins.

- 1570H x 1000W x 600D mm
- Tough, double sided steel construction.
- Powder coated light grey frames and panels (blue panels available on request - please call for availability)
- Supplied with 56x size 4 bins - each 163H x 205W x 345D mm
- Can be used as a work area separator.
- Levelling feet supplied.
- Supplied in starter / add-on bay format (add-on racks connect to starter racks to create longer runs)



Colour	Light grey RAL 7035 (option for blue RAL 5017 panels)
Dimensions (mm)	1570H x 1000W x 600D
Unit of sale	Each

Order Code	Colour	Model
GC011905	Light Grey RAL 7035	Starter Rack
GC011906	Light Grey RAL 7035	Add-on Rack

Store-Rite® Louvred Rack 1570H mm - Model C

Store-Rite® Free-standing Louvred Rack - Model C

Free-standing racks are Ideal for use in central warehouses, workshops and heavy duty retail locations. Kitted with 32x size 4 & 12x size 4D storage bins.

- 1570H x 1000W x 600D mm
- Tough, double sided steel construction.
- Powder coated light grey frames and panels (blue panels available on request - please call for availability)
- Supplied with 32x size 4 bins - each 163H x 205W x 345D mm
- Supplied with 12x size 4D bins - each 163H x 410W x 345D mm
- Can be used as a work area separator.
- Levelling feet supplied.
- Supplied in starter / add-on bay format (add-on racks connect to starter racks to create longer runs)



Colour	Light grey RAL 7035 (option for blue RAL 5017 panels)
Dimensions (mm)	1570H x 1000W x 600D
Unit of sale	Each

Order Code	Colour	Model
GC011907	Light Grey RAL 7035	Starter Rack
GC011908	Light Grey RAL 7035	Add-on Rack

Store-Rite® Louvred Rack 1100H mm - Model D

Store-Rite® Free-standing Louvred Rack - Model D

Free-standing racks are Ideal for use in central warehouses, workshops and heavy duty retail locations. Kitted with 24x size 4 & 8x size 4D storage bins.

- 1170H x 1000W x 600D mm
- Tough, double sided steel construction.
- Powder coated light grey frames and panels (blue panels available on request - please call for availability)
- Supplied with 24x size 4 bins - each 163H x 205W x 345D mm
- Supplied with 8x size 4D bins - each 163H x 410W x 345D mm
- Can be used as a work area separator.
- Levelling feet supplied.
- Supplied in starter / add-on bay format (add-on racks connect to starter racks to create longer runs)



Colour	Light grey RAL 7035 (option for blue RAL 5017 panels)
Dimensions (mm)	1100H x 1000W x 600D
Unit of sale	Each

Order Code	Colour	Model
GC011911	Light Grey RAL 7035	Starter Rack
GC011912	Light Grey RAL 7035	Add-on Rack



Storage Bins & Accessories

Store-Rite® Louvred Trolley - Model E

Store-Rite® Louvred Trolley - Model E

Louvred trolleys are Ideal for use in central warehouses, workshops and heavy duty retail locations. Kitted with 16x size 2 & 72x size 3 storage bins.

- 1300H x 1000W x 600D mm
- Tough, double sided steel construction.
- Powder coated light grey frames and panels (blue panels available on request - please call for availability)
- Supplied with 16x size 2 bins - each 75H x 105W x 160D mm
- Supplied with 72x size 3 bins - each 120H x 144W x 235D mm
- Comfort grip push/pull handle
- Supplied with 4 castors; two fixed, two swivel (one with brake)



Colour	Light grey RAL 7035 (option for blue RAL 5017 panels)
Dimensions (mm)	1300H x 1000W x 600D
Unit of sale	Each

Order Code

GC011914

Store-Rite® Louvred Trolley - Model F

Store-Rite® Louvred Trolley - Model F

Louvred trolleys are Ideal for use in central warehouses, workshops and heavy duty retail locations. Kitted with 24x size 4 & 8x size 4D storage bins.

- 1300H x 1000W x 600D mm
- Tough, double sided steel construction.
- Powder coated light grey frames and panels (blue panels available on request - please call for availability)
- Supplied with 24x size 4 bins - each 163H x 205W x 345D mm
- Supplied with 8x size 4D bins - each 163H x 410W x 345D mm
- Comfort grip push/pull handle
- Supplied with 4 castors; two fixed, two swivel (one with brake)



Colour	Light grey RAL 7035 (option for blue RAL 5017 panels)
Dimensions (mm)	1300H x 1000W x 600D
Unit of sale	Each

Order Code

GC011915

Budget Black Plastic Panels 400H X 340W mm (pair)

2 x budget conscious plastic louvred panels manufactured in the EU.

Panels are 340mm wide (13.4") and 400mm high (15.75").

- Suitable for use with our range of small parts bins - sizes 1-3
- Each 450H x 500W panel will comfortably fit either 18 x size 1, 12 x size 2, 6 x size 3 or a combination of all sizes
- Sold in pairs

We do not recomend these panels for heavier loads (such as for the storage of fixings).



Colour	Black
Dimensions (mm)	400H x 340W
Unit of sale	Pair

Order Code

GC011307

Budget Galvanised Panels 400H X 340W mm (pair)

2 x budget conscious galvanised louvred panels manufactured in Italy.

Panels are 340mm wide (13.4") and 400mm high (15.75").

- Suitable for use with our range of small parts bins - sizes 1-3
- Each 450H x 500W panel will comfortably fit either 18 x size 1, 12 x size 2, 6 x size 3 or a combination of all sizes
- Sold in pairs



Colour	Galvanised
Dimensions (mm)	400H x 340W
Unit of sale	Pair

Order Code

GC011308



Store-Rite® Louvred Panels 450H x 500W mm (pair)

2 x robust louvred panels manufactured in the UK from 1.2mm first grade steel

Panels are 500mm wide (19.7") and 450mm high (17.7").

- Suitable for use with our range of small parts bins
- Hard wearing powder coated finish - choose from grey or blue
- Each 450H x 500W panel will comfortably fit either 16 x size 1, 16 x size 2, 9 x size 3, 4 x size 4 or a combination of all sizes
- Sold in pairs



Colour	Select
Dimensions (mm)	450H x 500W mm
Unit of sale	Pairs

Order Code	Colour
GC011301	Grey - RAL 7035
GC011302	Blue - RAL5017

Store-Rite® Louvred Panels 900H x 500W mm (pair)

2 x robust louvred panels manufactured in the UK from 1.2mm first grade steel

Panels are 500mm wide (19.7") and 900mm high (35.4").

- Suitable for use with our range of small parts bins
- Hard wearing powder coated finish - choose from grey or blue
- Each 900H x 500W panel will comfortably fit either 32 x size 1, 32 x size 2, 18 x size 3, 8 x size 4 or a combination of all sizes
- Sold in pairs



Colour	Select
Dimensions (mm)	900H x 500W mm
Unit of sale	Pairs

Order Code	Colour
GC011304	Blue - RAL 5017
GC011303	Grey - RAL 7035

Attached Lid Containers (pack of 5)

This range of folding lid containers are specifically designed with the operator in mind. They come with ergonomic handles, textured surfaces for label attachment, and an interlocking lid.



All attached lid containers are nestable i.e. each container slides inside the other when not in use, with stops around the edge to prevent sticking. When in use the containers stack neatly on top of one another. All containers have an integral card holder for product or destination identification.

- Manufactured in blue impact resistant polypropylene.
- Supplied in packs of 5.

Colour	Blue
Dimensions mm	Select
Unit of sale	pk/5

Order Code	Colour	Dimensions mm	Volume (litres)
GC010250	Blue	475L x 335W x 275H	32
GC010251	Blue	600L x 400W x 300H	55
GC010252	Blue	600L x 400W x 370H	70
GC010253	Blue	600L x 400W x 420H	80

Eurocontainers - pack of 5 400L x 300W mm

Strong and durable eurocontainers with straight walls for large internal capacity and secure stacking



Manufactured in first grade polypropylene material for strength. Ideal for use in general industry and transportation for the safe handling and storage of components large or small.

- 400L x 300W mm footprint (355L x 255W mm internally)
- Available in 5 different heights
- Straight walls ensure maximum internal capacity
- Lids are available separately enabling safe stacking and transportation
- Containers are supplied with solid sides
- Standard colour is grey
- Supplied in packs of 5

A 600L x 400W version is also available

Perforated sides, other colours and hot-stamping are all available on request – please contact us for details (minimum order quantities apply).

Colour	Grey
Dimensions (mm)	400L x 300W
Unit of sale	pk/5

Order Code	Colour	Height (Internal) mm	Volume (litres)
GC030440	Grey	120 (110)	10
GC030441	Grey	170 (165)	15
GC030442	Grey	220 (207)	20
GC030443	Grey	270 (260)	25
GC030444	Grey	320 (310)	30



Storage Bins & Accessories

Eurocontainers - pack of 5 600L x 400W mm

Strong and durable eurocontainers with straight walls for large internal capacity and secure stacking

Manufactured in first grade polypropylene material for strength. Ideal for use in general industry and transportation for the safe handling and storage of components large or small.

- 600L x 400W mm footprint (555L x 355W mm internally)
- Available in 6 different heights
- Straight walls ensure maximum internal capacity.
- Lids are available seperately enabling safe stacking and transportation.
- Containers are supplied with solid sides.
- Standard colour is grey.
- Supplied in packs of 5.

A 400L x 300W version is also available

Perforated sides, other colours and hot-stamping are all available on request – please contact us for details (minimum order quantities apply).



Colour	Grey
Dimensions (mm)	600L x 400W
Unit of sale	pk/5

Order Code	Colour	Height (Internal) mm	Volume (litres)
GC030445	Grey	120 (112)	20
GC030446	Grey	150 (145)	27
GC030447	Grey	170 (165)	30
GC030448	Grey	200 (187)	40
GC030449	Grey	270 (265)	52
GC030450	Grey	320 (315)	60

Eurocontainer Transport Dolly 600L x 400W mm

This unit will accept 400 x 300 and 600 x 400 Eurocontainers and provides simple handling around the workshop and warehouse.

Plastic deck with four swivel castors.



Colour	Grey (colour may vary)
Dimensions (mm)	610L x 410W x 161H
Unit of sale	Each

Order Code
GC030401

27 Litre Stack & Nest (pack/5) 600L x 400W x 150D mm

Premium quality industrial stack/nest containers. Each container measures 600L x 400W x 150H mm

Common Features:

- Manufactured from high impact Polypropylene
- All materials used are food safe
- General wall thickness 3 mm and base thickness 3mm
- Base is designed for smooth running on roller conveyors
- Minimal base distortion when loaded to 25 kilograms
- Stack/nest design to optimise handling and space utilisation when being transported or handled empty
- Designed for automated picking systems or manual use
- Bar code recess on sides of box
- Ergonomically designed hand holds for comfortable manual handling
- Address label flap on one end
- Extremely rugged, robust design for arduous use
- Sold in packs of 5



Colour	Select
Dimensions (mm)	600L x 400W x 150D
Unit of sale	Pk/5

Order Code	Colour	Volume (litres)
GC033001	Blue	27
GC033002	Green	27
GC033003	Grey	27
GC033004	Red	27
GC033005	Black	27



56 Litre Stack & Nest (pack/5) 600L x 400W x 300D mm

Premium quality industrial stack/nest containers. Each container measures 600L x 400W x 300H mm

Common Features:

- Manufactured from high impact Polypropylene
- All materials used are food safe
- General wall thickness 3 mm and base thickness 5mm
- Base is designed for smooth running on roller conveyors
- Minimal base distortion when loaded to 25 kilograms
- Stack/nest design to optimise handling and space utilisation when being transported or handled empty
- Designed for automated picking systems or manual use
- Bar code recess on sides of box
- Ergonomically designed hand holds for comfortable manual handling
- Address label flap on one end
- Extremely rugged, robust design for arduous use
- Sold in packs of 5



Colour	Select
Dimensions (mm)	600L x 400W x 300D
Unit of sale	Pk/5

Order Code	Colour	Volume (litres)
GC033006	Blue	56
GC033007	Green	56
GC033008	Grey	56
GC033009	Red	56
GC033010	Black	56

Model A - 9 compartments

Ideal for the storage of fixings and other small parts.

Modular tilt box system based on 5 models all with the same 600mm width. Models can be clipped together and/or attached to a wall or other flat surface. The fully enclosed housings prevent the ingress of dust.

- Made in Italy of moulded shock proof plastic
- Ergonomic full width handles with integral label holder on each drawer
- Clear plastic allow easy visual identification of the drawers contents
- Swing out drawers are removeable
- Sold singly

If required, retaining bars, which keep the drawers from opening during transit, are available.



Colour	Red
No. Compartments	9
Dimensions (mm)	76H x 600W x 68D
Compartment Dimensions (mm)	66H x 60W x 47D
Unit of sale	Each

Order Code

GC010201

Model B - 6 compartments

Ideal for the storage of fixings and other small parts.

Modular tilt box system based on 5 models all with the same 600mm width. Models can be clipped together and/or attached to a wall or other flat surface. The fully enclosed housings prevent the ingress of dust.

- Made in Italy of moulded shock proof plastic
- Ergonomic full width handles with integral label holder on each drawer
- Clear plastic allow easy visual identification of the drawers contents
- Swing out drawers are removeable
- Sold singly

If required, retaining bars, which keep the drawers from opening during transit, are available.



Colour	Red
No. Compartments	6
Dimensions (mm)	112H x 600W x 94D
Compartment Dimensions (mm)	100H x 93W x 70D
Unit of sale	Each

Order Code

GC010202

Model C - 5 compartments

Ideal for the storage of fixings and other small parts.

Modular tilt box system based on 5 models all with the same 600mm width. Models can be clipped together and/or attached to a wall or other flat surface. The fully enclosed housings prevent the ingress of dust.

- Made in Italy of moulded shock proof plastic
- Ergonomic full width handles with integral label holder on each drawer
- Clear plastic allow easy visual identification of the drawers contents
- Swing out drawers are removeable
- Sold singly

If required, retaining bars, which keep the drawers from opening during transit, are available.



Colour	Red
No. Compartments	5
Dimensions (mm)	164H x 600W x 135D
Compartment Dimensions (mm)	151H x 113W x 104D
Unit of sale	Each

Order Code

GC010203



Storage Bins & Accessories

Model D - 4 compartments

Ideal for the storage of fixings and other small parts.

Modular tilt box system based on 5 models all with the same 600mm width. Models can be clipped together and/or attached to a wall or other flat surface. The fully enclosed housings prevent the ingress of dust.



- Made in Italy of moulded shock proof plastic
- Ergonomic full width handles with integral label holder on each drawer
- Clear plastic allow easy visual identification of the drawers contents
- Swing out drawers are removeable
- Sold singly

If required, retaining bars, which keep the drawers from opening during transit, are available.

Colour	Red
No. Compartments	4
Dimensions (mm)	206H x 600W x 177D
Compartment Dimensions (mm)	193H x 142W x 133D
Unit of sale	Each
Order Code	
GC010204	

Model E - 3 compartments

Ideal for the storage of fixings and other small parts.

Modular tilt box system based on 5 models all with the same 600mm width. Models can be clipped together and/or attached to a wall or other flat surface. The fully enclosed housings prevent the ingress of dust.



- Made in Italy of moulded shock proof plastic
- Ergonomic full width handles with integral label holder on each drawer
- Clear plastic allow easy visual identification of the drawers contents
- Swing out drawers are removeable
- Sold singly

If required, retaining bars, which keep the drawers from opening during transit, are available.

Colour	Red
No. Compartments	3
Dimensions (mm)	240H x 600W x 214D
Compartment Dimensions (mm)	225H x 191W x 154D
Unit of sale	Each
Order Code	
GC010205	

Transit Bars for Tiltbox System

Suitable for use with our Tilt Box System, these retaining bars simply clip-on, preventing drawers from opening during transit.

- Select model from list above
- Sold singly



Unit of sale	Each
Order Code	No. Compartments
GC010226	To suit 9 compartment unit
GC010227	To suit 6 compartment unit
GC010228	To suit 5 compartment unit
GC010229	To suit 4 compartment unit
GC010230	To suit 3 compartment unit

Free-standing Tiltbox Rack

Free-standing rack modules available either empty, for you to add your own combination of tilt boxes, or kitted as shown in the image.

- Dimensions: 1750H x 610W x 330D mm
- Steel frame construction, powder coated in light grey RAL 7035.
- The Rack Module is offered empty for the user to add the required combination of tilt box units or as a fully kitted unit (see image) using a popular combination of units.
- Note the usable height of the Rack is 1650 mm and the overall height of the tilt boxes selected should not exceed this dimension.
- Any number of the Rack Modules may be positioned together to form longer runs both single sided and back-to-back for double sided units. These make ideal work area separators in an open plan environment.
- For safety single sided individual racks or runs should be securely fixed to a wall or other suitable vertical surface. When used back-to-back the units should be bolted together The kitted version, as shown in the image above, includes:
2 x Model A, 3 x Model B, 3 x Model C, 2 x Model D & 1 x Model E



Colour	Grey - RAL 7035
Rack Module	Available either empty or kitted
No. Compartments	Kitted version has 2 x Model A, 3 x Model B, 3 x Model C, 2 x Model D & 1 x Model E
Dimensions (mm)	1750H x 610W x 330D
Compartment Dimensions (mm)	See individual products for details
Unit of sale	Each

Order Code	Colour	Rack Module
GC010206	Grey	Empty
GC010207	Grey	Kitted



Store-Rite® Bin Cupboard 1000x700x280 w/18 No2 & 16 No3 Bins



Store-Rite® slim line compact bin cupboard. Ideal for the secure storage of small components in confined spaces.

- 1000H x 700W x 280D mm
- Compact slim line width of 700mm and depth of 280mm
- Supplied with 18x No2 bins (75H x 105W x 160D mm)
- Supplied with 16x No3 bins (120H x 144W x 235D mm)
- We recommend floor or wall fixing for safety in use
- British manufactured full steel construction.
- Multi-point locking operated by flush fitting handle, two keys provided.
- Powder coated – housing in light grey and doors in contrasting blue.
- Shelves are galvanised for long-lasting service

Colour	Grey RAL 7035 Housing with Blue RAL 5017 Doors
Dimensions (mm)	1000H x 700W x 280D
Unit of sale	Each

Order Code

GC012501

Store-Rite® Bin Cupboard 2000x700x280 w/60 No2 & 24 No3 Bins



Store-Rite® slim line compact bin cupboard. Ideal for the secure storage of small components in confined spaces.

- 2000H x 700W x 280D mm
- Compact slim line width of 700mm and depth of 280mm
- Supplied with 60x No2 bins (75H x 105W x 160D mm)
- Supplied with 24x No3 bins (120H x 144W x 235D mm)
- We recommend floor or wall fixing for safety in use
- British manufactured full steel construction.
- Multi-point locking operated by flush fitting handle, two keys provided.
- Powder coated – housing in light grey and doors in contrasting blue.
- Shelves are galvanised for long-lasting service

Colour	Grey RAL 7035 Housing with Blue RAL 5017 Doors
Dimensions (mm)	2000H x 700W x 280D
Unit of sale	Each

Order Code

GC012503

Store-Rite® Bin Cupboard 1600x700x280 w/40 No3 Bins



Store-Rite® slim line compact bin cupboard. Ideal for the secure storage of small components in confined spaces.

- 1600H x 700W x 280D mm
- Compact slim line width of 700mm and depth of 280mm
- Supplied with 40x No3 bins (120H x 144W x 235D mm)
- We recommend floor or wall fixing for safety in use
- British manufactured full steel construction.
- Multi-point locking operated by flush fitting handle, two keys provided.
- Powder coated – housing in light grey and doors in contrasting blue.
- Shelves are galvanised for long-lasting service

Colour	Grey RAL 7035 Housing with Blue RAL 5017 Doors
Dimensions (mm)	1600H x 700W x 280D
Unit of sale	Each

Order Code

GC012502

Store-Rite® Bin Cupboard 1000x1000x440 w/16 No4 Bins



Store-Rite® heavy duty bin cupboard. Ideal for the secure storage of heavier small parts.

- 1000H x 1000W x 440D mm
- Full 1000mm metric width and clear internal depth of 400mm
- Supplied with 16x No4 bins (163H x 205W x 345D mm)
- British manufactured full steel construction.
- Multi-point locking operated by flush fitting handle, two keys provided.
- Powder coated – housing in light grey and doors in contrasting blue.
- Shelves are galvanised for long-lasting service

Colour	Grey RAL 7035 Housing with Blue RAL 5017 Doors
Dimensions (mm)	1000H x 1000W x 440D
Unit of sale	Each

Order Code

GC013001



Storage Bins & Accessories

Store-Rite® Bin Cupboard 1000x1000x540 w/9 No5 Bins

Store-Rite® heavy duty bin cupboard. Ideal for the secure storage of heavier small parts.

- 1000H x 1000W x 540D mm
- Full 1000mm metric width and clear internal depth of 500mm
- Supplied with 9x No5 bins (189H x 298W x 485D mm)
- British manufactured full steel construction.
- Multi-point locking operated by flush fitting handle, two keys provided.
- Powder coated – housing in light grey and doors in contrasting blue.
- Shelves are galvanised for long-lasting service



Colour	Grey RAL 7035 Housing with Blue RAL 5017 Doors
Dimensions (mm)	1000H x 1000W x 540D
Unit of sale	Each

Order Code

GC013002

Store-Rite® Bin Cupboard 2000x1000x540 w/24 No5 Bins

Store-Rite® heavy duty bin cupboard. Ideal for the secure storage of heavier small parts.

- 2000H x 1000W x 540D mm
- Full 1000mm metric width and clear internal depth of 500mm
- Supplied with 24x No5 bins (189H x 298W x 485D mm)
- British manufactured full steel construction.
- Multi-point locking operated by flush fitting handle, two keys provided.
- Powder coated – housing in light grey and doors in contrasting blue.
- Shelves are galvanised for long-lasting service



Colour	Grey RAL 7035 Housing with Blue RAL 5017 Doors
Dimensions (mm)	2000H x 1000W x 540D
Unit of sale	Each

Order Code

GC013004

Store-Rite® Bin Cupboard 2000x1000x440 w/32 No4 Bins

Store-Rite® heavy duty bin cupboard. Ideal for the secure storage of heavier small parts.

- 2000H x 1000W x 440D mm
- Full 1000mm metric width and clear internal depth of 400mm
- Supplied with 32x No4 bins (163H x 205W x 345D mm)
- British manufactured full steel construction.
- Multi-point locking operated by flush fitting handle, two keys provided.
- Powder coated – housing in light grey and doors in contrasting blue.
- Shelves are galvanised for long-lasting service



Colour	Grey RAL 7035 Housing with Blue RAL 5017 Doors
Dimensions (mm)	2000H x 1000W x 440D
Unit of sale	Each

Order Code

GC013003

Store-Rite® Compact Louvred Cupboard 1600x700x280 - Model A

Store-Rite® slim line louvred bin cupboard. Ideal for the secure storage of small lightweight parts in confined spaces.

- 1600H x 700W x 280D mm
- Compact slim line width of 700mm and depth of 280mm
- Supplied with 40x No3 bins (120H x 144W x 235D mm)
- We recommend floor or wall fixing for safety in use
- British manufactured full steel construction.
- Multi-point locking operated by flush fitting handle, two keys provided.
- Powder coated – housing in light grey and doors in contrasting blue.



Accepts bin sizes 1-3 inclusive. Size 3 bins make full use of the depth of this cupboard. Note that sizes 4, 4D & 5 bins are not suitable for use with this cupboard.

Colour	Grey RAL 7035 Housing with Blue RAL 5017 Doors
Dimensions (mm)	1600H x 700W x 280D
Unit of sale	Each

Order Code

GC012301



Store-Rite® Compact Louvred Cupboard 1600x700x280 - Model B

Store-Rite® slim line louvred bin cupboard. Ideal for the secure storage of small lightweight parts in confined spaces.

- 1600H x 700W x 280D mm
- Compact slim line width of 700mm and depth of 280mm
- Supplied with 6x No1 bins (53H x 105W x 88D mm)
- Supplied with 18x No2 bins (75H x 105W x 160D mm)
- Supplied with 24x No3 bins (120H x 144W x 235D mm)
- We recommend floor or wall fixing for safety in use
- British manufactured full steel construction.
- Multi-point locking operated by flush fitting handle, two keys provided.
- Powder coated – housing in light grey and doors in contrasting blue.

Accepts bin sizes 1-3 inclusive. Size 3 bins make full use of the depth of this cupboard. Note that sizes 4, 4D & 5 bins are not suitable for use with this cupboard.



Colour	Grey RAL 7035 Housing with Blue RAL 5017 Doors
Dimensions (mm)	1600H x 700W x 280D
Unit of sale	Each

Order Code

GC012302

Store-Rite® Compact Louvred Cupboard 2000x700x280

Store-Rite® slim line louvred bin cupboard. Ideal for the secure storage of small lightweight parts in confined spaces.

- 2000H x 700W x 280D mm
- Compact slim line width of 700mm and depth of 280mm
- Supplied with 20x No1 bins (53H x 105W x 88D mm)
- Supplied with 48x No2 bins (75H x 105W x 160D mm)
- Supplied with 24x No3 bins (120H x 144W x 235D mm)
- We recommend floor or wall fixing for safety in use
- British manufactured full steel construction.
- Multi-point locking operated by flush fitting handle, two keys provided.
- Powder coated – housing in light grey and doors in contrasting blue.

Accepts bin sizes 1-3 inclusive. Size 3 bins make full use of the depth of this cupboard. Note that sizes 4, 4D & 5 bins are not suitable for use with this cupboard.



Colour	Grey RAL 7035 Housing with Blue RAL 5017 Doors
Dimensions (mm)	2000H x 700W x 280D
Unit of sale	Each

Order Code

GC012303

Store-Rite® Louvred Cupboard 2000x1000x440 - Model A

Store-Rite® full sized louvred bin cupboard. Ideal for the secure storage of lightweight parts.

- 2000H x 1000W x 440D mm
- Full 1000mm metric width and clear internal depth of 400mm
- Supplied with 14x No2 bins (75H x 105W x 160D mm)
- Supplied with 42x No3 bins (120H x 144W x 235D mm)
- Supplied with 8x No4 bins (163H x 410W x 345D mm)
- British manufactured full steel construction.
- Multi-point locking operated by flush fitting handle, two keys provided.
- Powder coated – housing in light grey and doors in contrasting blue.

Accepts bin sizes 1-4D inclusive. Note that size 5 bins are not suitable for use with this cupboard.



Colour	Grey RAL 7035 Housing with Blue RAL 5017 Doors
Dimensions (mm)	2000H x 1000W x 440D
Unit of sale	Each

Order Code

GC012401

Store-Rite® Louvred Cupboard 2000x1000x440 - Model B

Store-Rite® full sized louvred bin cupboard. Ideal for the secure storage of lightweight parts.

- 2000H x 1000W x 440D mm
- Full 1000mm metric width and clear internal depth of 400mm
- Supplied with 14x No2 bins (75H x 105W x 160D mm)
- Supplied with 42x No3 bins (120H x 144W x 235D mm)
- Supplied with 16x No4 bins (163H x 205W x 345D mm)
- British manufactured full steel construction.
- Multi-point locking operated by flush fitting handle, two keys provided.
- Powder coated – housing in light grey and doors in contrasting blue.

Accepts bin sizes 1-4D inclusive. Note that size 5 bins are not suitable for use with this cupboard.



Colour	Grey RAL 7035 Housing with Blue RAL 5017 Doors
Dimensions (mm)	2000H x 1000W x 440D
Unit of sale	Each

Order Code

GC012402



Storage Bins & Accessories

1920H x 900W x 450D mm with 16 x No.4D Bins

Heavy duty shelving system with galvanised metal components for long lasting service complete with a carefully selected bin kit. Ideal for a variety of storage uses. colour coded bins for easy separation and organisation of your items.



Bay size: 1920H x 900W x 450D mm (75.6" x 35.4" x 17.7") .

- 5 adjustable height shelves with 8mm chipboard inlay
- Generous 175kg per shelf uniformly distributed load capacity. Total bay load capacity of 875kg
- Heavy duty open fronted bins manufactured in Italy from high density polyethylene
- 16 x size 4D bins. Dimensions: 163mm high x 410mm wide x 345mm deep
- Easy build bolt free construction
- If you wish to extend the run of racking, additional units can added on using standard nuts and bolts

Please note that from time to time bin colours may vary; however, wherever possible we will send out bin colours as per the image

Colour	Mixed (colours may vary)
Dimensions (mm)	1920H x 900W x 450D
Unit of sale	Kit
Order Code	
GC012201	

1920H x 900W x 450D mm with 32 x No.4 Bins

Heavy duty shelving system with galvanised metal components for long lasting service complete with a carefully selected bin kit. Ideal for a variety of storage uses. Dual colour bins for easy separation and organisation of your items.



Bay size: 1920H x 900W x 450D mm (75.6" x 35.4" x 17.7") .

- 5 adjustable height shelves with 8mm chipboard inlay
- Generous 175kg per shelf uniformly distributed load capacity. Total bay load capacity of 875kg
- Heavy duty open fronted bins manufactured in Italy from high density polyethylene
- 32 x size 4 bins. Dimensions: 163mm high x 205mm wide x 345mm deep
- Easy build bolt free construction
- If you wish to extend the run of racking, additional units can added on using standard nuts and bolts

Please note that from time to time bin colours may vary; however, wherever possible we will send out bin colours as per the image.

Colour	Mixed (colours may vary)
Dimensions (mm)	1920H x 900W x 450D
Unit of sale	Kit
Order Code	
GC012202	

1920H x 900W x 450D mm with 16 x No.4 & 8 x No.4D Bins

Heavy duty shelving system with galvanised metal components for long lasting service complete with a carefully selected bin kit. Ideal for a variety of storage uses. Dual colour bins for easy separation and organisation of your items.



Bay size: 1920H x 900W x 450D mm (75.6" x 35.4" x 17.7") .

- 5 adjustable height shelves with 8mm chipboard inlay
- Generous 175kg per shelf uniformly distributed load capacity. Total bay load capacity of 875kg
- Heavy duty open fronted bins manufactured in Italy from high density polyethylene
- 16 x size 4 bins. Dimensions: 163mm high x 205mm wide x 345mm deep
- 8 x size 4D bins. Dimensions: 163mm high x 410mm wide x 345mm deep
- Easy build bolt free construction
- If you wish to extend the run of racking, additional units can added on using standard nuts and bolts

Please note that from time to time bin colours may vary; however, wherever possible we will send out bin colours as per the image

Colour	Mixed (colours may vary)
Dimensions (mm)	1920H x 900W x 450D
Unit of sale	Kit
Order Code	
GC012203	



**1920H x 900W x
450D mm with 30 x
No.3, 8 x No.4 & 4 x
No.4D Bins**



Heavy duty shelving system with galvanised metal components for long lasting service complete with a carefully selected bin kit. Ideal for a variety of storage uses. Dual colour bins for easy separation and

organisation of your items. Bay size: 1920H x 900W x 450D mm (75.6" x 35.4" x 17.7") .

- 5 adjustable height shelves with 8mm chipboard inlay
- Generous 175kg per shelf uniformly distributed load capacity. Total bay load capacity of 875kg
- Heavy duty open fronted bins manufactured in Italy from high density polyethylene
- 30 x size 3 bins. Dimensions: 120mm high x 144mm wide x 235mm deep
- 8 x size 4 bins. Dimensions: 163mm high x 205mm wide x 345mm deep
- 4 x size 4D bins. Dimensions: 163mm high x 410mm wide x 345mm deep
- Easy build bolt free construction
- If you wish to extend the run of racking, additional units can added on using standard nuts and bolts

Please note that from time to time bin colours may vary; however, wherever possible we will send out bin colours as per the image

Colour	Mixed (colours may vary)
Dimensions (mm)	1920H x 900W x 450D
Unit of sale	Kit

Order Code

GC012204