

# small parts storage

Best Seller



From only  
**76p** each  
20 per pack

Small Parts  
Bins  
turn to page

5

Page

small parts bins	4
linbin trays & accessories	7
louvre panels & linbin kits	8
visible storage cabinets	12
storage bin cabinets	13
stala tilt bins	14

## Small Parts Bins

### Linbins - ten sizes in four bright colours

- The toughest bin available
- Reinforcing ribs - stack without distortion
- Full width lip - secure fixing to louvre panel
- Linbins can be wall mounted using our louvre panels
- Made from high strength polypropylene co-polymer
- Labels Supplied at no extra charge

From only  
**83p each**  
20 per pack



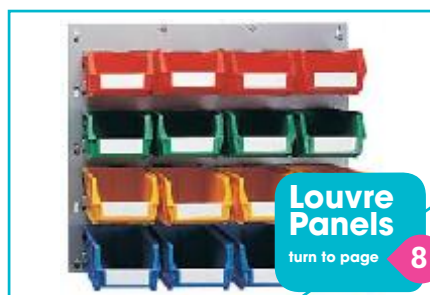
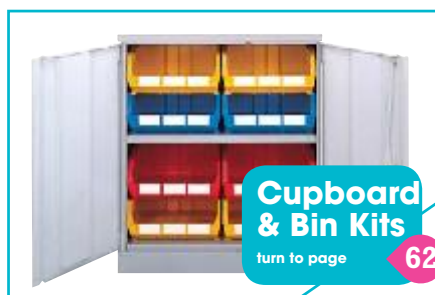
Discounts available for larger quantities

Coloured Linbin Packs - Just choose your colours  
- Add colour code red (RD), yellow (YE), green (GN) or blue (BL)

Size	Height	Width	Depth	LBU	Pack Qty	Order 1-5 Packs	Price £ 1-5	Order 6+ Packs	Price £ 6+
2	75mm	105mm	135mm	1	20	VPK02A	£17.63	VPK02B	£16.76
3	75mm	105mm	190mm	1	20	VPK03A	£23.47	VPK03B	£22.32
4	130mm	140mm	210mm	2	10	VPK04A	£24.17	VPK04B	£22.98
5	130mm	140mm	280mm	2	10	VPK05A	£34.15	VPK05B	£32.47
6	180mm	210mm	280mm	4	10	VPK06A	£55.67	VPK06B	£52.93
7	180mm	210mm	375mm	4	10	VPK07A	£57.29	VPK07B	£54.47
8	180mm	420mm	375mm	8	5	VPK08A	£47.36	VPK08B	£45.03
10	295mm	420mm	455mm	12	3	VPK10A	£49.17	VPK10B	£46.75

Note: packs are in quantities stated, one colour per pack. Please specify colour when ordering.

Sizes 1 & 9 Linbins are still available but with minimum order quantities required, please call for details.



## Economical Grey Small Parts Bins

Grey Linbins are exactly the same as coloured Linbins. They're just as strong because they're made to the same design, on the same moulds, using the same high-strength polypropylene co-polymer. So why are they more cost effective?

Simple - we save on colour pigment and since over 60% of our sales are grey Linbins, we produce larger batch quantities and pass the savings on to you.

- Same top quality
- Same unique design
- Same high strength
- Guaranteed for life

From Only  
**76p each**  
 20 Per Pack



Discounts available for larger quantities - call us for details

Size	Height	Width	Depth	LBU	Pack Qty	Order 1-5 Packs	Price £ 1-5	Order 6+ Packs	Price £ 6+
Size 2	75mm	105mm	135mm	1	20	VPK02AGR	£15.97	VPK02BGR	£15.22
Size 3	75mm	105mm	190mm	1	20	VPK03AGR	£21.05	VPK03BGR	£20.06
Size 4	130mm	140mm	210mm	2	10	VPK04AGR	£21.84	VPK04BGR	£20.82
Size 5	130mm	140mm	280mm	2	10	VPK05AGR	£31.39	VPK05BGR	£29.91
Size 6	180mm	210mm	280mm	4	10	VPK06AGR	£45.48	VPK06BGR	£43.35
Size 7	180mm	210mm	375mm	4	10	VPK07AGR	£52.35	VPK07BGR	£49.90
Size 8	180mm	420mm	375mm	8	5	VPK08AGR	£44.04	VPK08BGR	£41.97
Size 10	295mm	420mm	455mm	12	3	VPK10AGR	£45.35	VPK10BGR	£43.22

Note: Packs are supplied in quantities stated.

Sizes 1 & 9 Linbins are still available but with minimum order quantities required, please call for details.

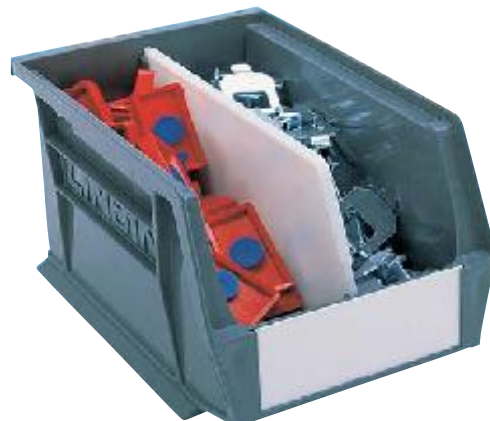
## Linbin Divider Packs

Dividers will fit into most Linbins - some will accept two

For Linbin Size	Pack Qty	Order 1-5 Packs	Price £ 1-5	Order 6+ Packs	Price £ 6+
Size 2	20	VDKP2A	£8.90	VDKP2B	£8.46
Size 3	20	VDKP3A	£10.57	VDKP3B	£10.05
Size 4	20	VDKP4A	£15.57	VDKP4B	£14.81
Size 5	10	VDKP5A	£10.46	VDKP5B	£9.94
Size 6	10	VDKP6A	£16.71	VDKP6B	£15.89
Size 7	5	VDKP7A	£9.30	VDKP7B	£8.84
Size 8	5	VDKP8A	£9.30	VDKP8B	£8.84
Size 10	3	VDKP10A	£13.43	VDKP10B	£12.77

Note: Linbin sizes 8 and 10 will accommodate one or two dividers each.

Sizes 1 and 9 will not accept dividers.



## Clearview Linbins

Ideal for environments where hygiene is paramount

- Hospitals
- Laboratories
- Food industry
- Research Departments
- Colleges

The dimensions are exactly the same as the successful colour and grey Linbin Range, therefore you can implement these Linbins into an existing environment of small parts storage using standard louvre panels.

- Available in four sizes as standard
- Lightweight
- Smooth easy-clean finish
- Durable
- See stock levels at a glance
- Fully compatible with standard Linbins
- Linbins can be wall mounted using our louvre panels



### Discounts for larger quantities

Size	LBU	Height	Width	Depth	Pack Qty	Order 1-5 packs	Price £ 1-5	Order 6+ packs	Price £ 6+
2	1	75mm	105mm	135mm	20	VPK02ACL	£17.63	VPK02BCL	£16.76
4	2	130mm	140mm	210mm	10	VPK04ACL	£24.17	VPK04BCL	£22.98
6	4	180mm	210mm	280mm	10	VPK06ACL	£55.67	VPK06BCL	£52.93
8	8	180mm	420mm	375mm	5	VPK08ACL	£47.34	VPK08BCL	£45.03

## Clearview Linbin and Louvre Trolley Kit

1100mm high tidy trolley complete with 16 x No.8 Clearview Linbins.

- See stock levels at a glance
- Easy product selection
- Durable
- Hygienic

Add Clearview Linbins to your Louvre Trolley – or simply buy a complete kit



1100H x 600W x 1100L Tidy Trolley complete with 16 Linbins  
VTCPK1  
**£515.49**

## 900mm High Louvre Panel Linbin Kit

900mm high x 500mm wide Louvre Panel complete with 25 clear Linbins

- 25 Linbins supplied:
- 16 x No.2,
  - 9 x No.4



900 x 500 Louvre Panel + 25 Clear Linbins  
VWPK1CL  
**£62.49**

## Linbin Picking Trays

- Designed to fit automated carousel machines or close picking shelves
- Manufactured from tough polypropylene for long life
- Can fit up to 8 dividers creating 9 compartments
- Optional wire end stops to prevent travel beyond shelf edge



Cupboard  
& Bin Kits

turn to page

62

From  
**£2.55**  
Each



Size 1

Size 2

Size 3

Size 4

Size 5

Size 6

## Linbin Trays

Size	Height	Width	Depth	Quantity	Order 1-5 packs	Price £ 1-5	Order 6+ packs	Price £ 6+
1	80mm	94mm	400mm	20	VTOPK1A	£53.67	VTOPK1B	£51.03
2	80mm	188mm	400mm	10	VTOPK2A	£39.96	VTOPK2B	£38.00
3	115mm	188mm	400mm	10	VTOPK3A	£56.76	VTOPK3B	£53.97
4	80mm	94mm	500mm	20	VTOPK4A	£61.57	VTOPK4B	£58.54
5	80mm	188mm	500mm	10	VTOPK5A	£43.74	VTOPK5B	£41.59
6	115mm	188mm	500mm	10	VTOPK6A	£59.12	VTOPK6B	£56.21

Each pack is supplied with 40 labels

## Linbin Tray Dividers

Fits trays	Quantity	Order 1-5 packs	Price £ 1-5	Order 6+ packs	Price £ 6+
VTOPK1/VTOPK4	20	VTPART1A	£6.45	VTPART1B	£6.10
VTOPK2/VTOPK5	10	VTPART2A	£4.96	VTPART2B	£4.69
VTOPK3/VTOPK6	10	VTPART3A	£6.20	VTPART3B	£5.87

Each pack is supplied with 20 labels



Linbin Tray Dividers

## Linbin Tray End Stops

Designed for shelving to hold tray at a convenient angle

The moulded end stop holds the tray at a convenient angle for order picking. Optional wire end stops VESW1 and VESW2 prevent the tray moving beyond the shelf edge.

Fits trays	Quantity	Order	Price £
VTOPK1/VTOPK4	20	VESW1	£14.99
VTOPK2/VTOPK3/ VTOPK5/VTOPK6	10	VESW2	£7.49



### Wall mounted Louvre Panel Linbin Kits

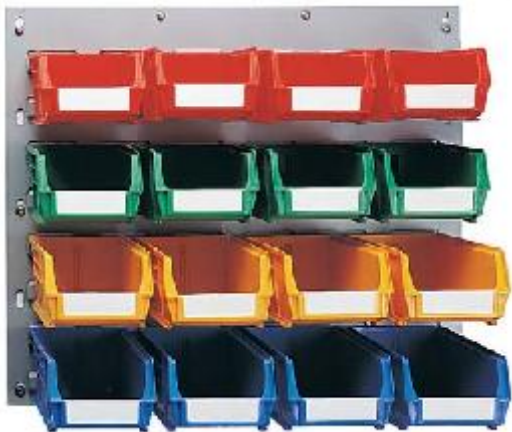
#### Ready-to-go kits for instant storage

Turn virtually any spare vertical space into useful storage

#### 450mm High Louvre Panel Linbin Kit

450mm high x 500mm wide Louvre panel complete with 16 coloured or grey Linbins

16 Linbins supplied: 4 x No.3 Yellow, 4 x No.3 Blue, 4 x No.2 Green and 4 x No.2 Red - or the same combination Linbins in Grey



450 x 500 panel  
+ 16 Colour Linbins  
VWPK1  
**£30.49**

450 x 500 panel  
+ 16 Grey Linbins  
VWPK1A  
**£27.99**

#### 900mm High Louvre Panel Linbin Kit

900mm high x 500mm wide Louvre panel complete with 25 coloured or grey Linbins

25 Linbins supplied:

- 8 x No.2 Blue,
- 8 x No.3 Yellow,
- 3 x No.4 Green and
- 6 x No.4 Red

Or the same combination Linbins in Grey



900 x 500 Louvre Panel  
+ 25 Coloured Linbins  
VWPK8  
**£59.49**

900 x 500 Louvre Panel  
+ 25 Grey Linbins  
VWPK8A  
**£54.49**

#### 900mm High Louvre Panel Linbin Kit

900mm high x 500mm wide Louvre panel complete with 25 coloured or grey Linbins

25 Linbins supplied:

- 8 x No.2 Blue,
- 8 x No.3 Red,
- 6 x No.4 Yellow and
- 3 x No.5 Green

Or the same combination Linbins in Grey

900 x 500 Louvre Panel  
+ 25 Coloured Linbins  
VWPK5  
**£61.49**

900 x 500 Louvre Panel  
+ 25 Grey Linbins  
VWPK5A  
**£55.49**



#### 1400mm High Louvre Panel Linbin Kits

1400mm high x 500mm wide Louvre panel complete with 27 coloured or grey Linbins

27 Linbins supplied:

- 6 x No.4 Blue
- 9 x No.5 Red
- 6 x No.5 Green
- 6 x No.5 Yellow

Or the same combination Linbins in Grey



1400 x 500 panel  
+ 27 Colour Linbins  
VWPK10  
**£111.49**

1400 x 500 panel  
+ 27 Grey Linbins  
VWPK10A  
**£96.99**

## Wall Mounted Louvre Panels

### Turn empty wallspace into useful storage

Our strong steel louvre panels fit walls and other empty vertical surfaces such as desk sides, door and bench ends. The fixing holes are at 100mm pitch so the panels can be interlinked for a continuous run with no wasteful or unsightly gaps.

- Strong pressed steel construction
- Epoxy powder coated for a smart, durable finish
- Available in 4 sizes
- 2 colour options - blue or grey
- Can be purchased with Linbins as complete kits

Height	Width	LBU	Colour	Order	Price £	Colour	Order	Price £
450mm	500mm	16	Grey	VLP1GR	£14.49	Blue	VLP1BL	£14.49
900mm	500mm	32	Grey	VLP2GR	£20.99	Blue	VLP2BL	£20.99
1400mm	500mm	52	Grey	VLP3GR	£25.99	Blue	VLP3BL	£25.99
1800mm (2 x 900)	500mm	68	Grey	VLP4GR	£41.49	Blue	VLP4BL	£41.49



1500H x 500W Panel  
VLP3GR  
**£25.99**

2x 900H x 500W Panels  
VLP4GR  
**£41.49**

900H x 500W Panel  
VLP2GR  
**£20.99**

450H x 500W Panel  
VLP1GR  
**£14.49**

#### information box

#### How many Linbins will fit on a panel?

Every Louvre panel has a Linbin Unit Capacity (LBU). This is the total area available for Linbins.

To calculate how many bins will fit simply divide the panel LBU by the Linbin LBU.



Workbenches

turn to page

**109**

### Louvre Trolley

- Heavy duty frame accepts up to 250kg
- Strong, quiet, free-running rubber castors
- 2 braked castors fitted to all trolleys as standard
- Made to last, great value
- Two sizes
- Add your own choice of Linbins (use LBU values)
- Choose complete Louvre Trolley and Linbins package
- Quickly assembled
- Ideal for every use from workstation replenishment to order picking
- Save time by bringing the parts store to the person
- Linbins include FREE identification labels

1100H x 600W x 1100L  
Tidy Trolley  
VTRP1000  
**£396.99**

LBU Value 2 x 68 = 136

1600H x 600W x 1600L  
Tidy Trolley  
VTRP1400  
**£481.99**

LBU Value 2 x 172 = 344

**information box**  
Calculate how many Linbins you need, see page 9



### 1100mm high Louvre Trolley & Linbin Kits

Choose a trolley with bright colourful Linbins or economy grey for extra saving



1100H x 600W x 1100L Tidy Trolley  
with 76 colour Linbins  
VTRPK15  
**£617.99**

1100H x 600W x 1100L Tidy Trolley  
with 76 grey Linbins  
VTRPK15A  
**£577.99**

76 Linbins supplied:  
16 x No.3 Red, 12 x No.4 Green, 12 x No.4 Yellow, 12 x No.5 Red,  
12 x No.5 Blue, 12 x No.5 Yellow or the same combination Linbins  
in Grey



1100H x 600W x 1100L Tidy Trolley  
with 52 Colour Linbins  
VTRPK10  
**£594.99**

1100H x 600W x 1100L Tidy Trolley  
with 52 Grey Linbins  
VTRPK10A  
**£560.99**

52 Linbins supplied:  
Grey version shown, coloured combination includes  
16 x No.3 Blue, 12 x No.4 Yellow, 12 x No.5 Green, 8 x No.6 Red and  
4 x No.8 Blue



## Freestanding Louvre Panels

### Add Linbin storage anywhere

Our Freestanding Louvre Panels assemble in minutes to provide a rock-steady home for a full set of Linbins, no matter how heavily loaded.

#### Single-sided louvre panel units

Description	Height	Width	LBU	Order	Price £
Initial Unit	1400mm	1000mm	135	VSSR1410I	£220.99
Initial Unit	1800mm	1000mm	153	VSSR1810I	£232.49
Additional Bay Panel	1400mm	1000mm	135	VSSR1410A	£164.49
Additional Bay Panel	1800mm	1000mm	153	VSSR1810A	£181.49

All above panels are supplied without Linbins

#### Double-sided louvre panel units

Description	Height	Width	LBU	Order	Price £
Initial Unit	1400mm	1000mm	270	VDSR1410I	£283.49
Initial Unit	1800mm	1000mm	306	VDSR1810I	£303.99
Additional Bay Panel	1400mm	1000mm	270	VDSR1410A	£220.99
Additional Bay Panel	1800mm	1000mm	306	VDSR1810A	£237.99

All above panels are supplied without Linbins



## Freestanding Louvre Panel Kits

Freestanding Louvre Panel Kits single and double sided panels supplied complete with coloured or grey Linbins.

### 1400mm High Single Sided Louvre Panel Kit



Single Sided Louvre Panel with 56 grey Linbins  
VSTRPK3A

**£361.99**

56 Linbins supplied:

16 x No.2 Red, 8 x No.3 Yellow, 12 x No.4 Blue, 12 x No.5 Green, 8 x No.6 Blue Linbins or the same combination Linbins in Grey

Single Sided Louvre Panel with 56 colour Linbins  
VSTRPK3

**£372.99**

### 1800mm High Single / Double Sided Louvre Panel Kit



Single Sided Louvre Panel with 52 grey Linbins  
VSTRPK1A

**£390.99**

52 Linbins supplied:

24 x No.2 Red, 18 x No.4 Blue, 4 x No.6 Yellow, 4 x No.8 Red 2 x No.10 Green or the same combination Linbins in Grey

Single Sided Louvre Panel with 52 colour Linbins  
VSTRPK1

**£419.49**

## Visible Storage Cabinets

These versatile cabinets can be used as freestanding units, hung on walls or mounted on a space-saving Spacemiser turntable, stands or trolley.

- Clear Drawers
- Robust Polypropylene frames
- Strong galvanised steel shelves
- Two height and seven drawer options
- Handles recessed for protection in transit
- Drawer dividers available



### 290 Series Range

Overall Dimensions - 290 x 310 x 180 mm

Description	Drawer dimensions: L x W x H	Order	Price £
30 Drawer 290 Cabinet	175 x 55 x 37mm	V290-3	£29.20
24 Drawer 290 Cabinet	175 x 69 x 37mm	V291-3	£29.20
12 Drawer 290 Cabinet	175 x 138 x 37mm	V292-3	£29.20
12 Drawer 290 Cabinet	175 x 92 x 59mm	V294-3	£29.20
4 Drawer 290 Cabinet	175 x 277 x 59mm	V296-3	£29.20
6 Drawer 290 Cabinet	175 x 138 x 81mm	V297-3	£29.20
16 Mixed Drawer 290 Cabinet	Mixed Compartment	V290C-3	£29.20

\*12x L175 x W69 x H37mm, 3x L175 x W92 x H59mm and 1x L175 x W277 x H59mm



### 550 Series Range

Overall Dimensions - 550 x 310 x 180mm

Description	Drawer dimensions:	Order	Price £
60 Drawer 550 Cabinet	175 x 55 x 37mm	V550-3	£52.20
48 Drawer 550 Cabinet	175 x 69 x 37mm	V551-3	£52.20
24 Drawer 550 Cabinet	175 x 138 x 37mm	V552-3	£52.20
24 Drawer 550 Cabinet	175 x 92 x 59mm	V554-3	£52.20
8 Drawer 550 Cabinet	175 x 277 x 59mm	V556-3	£52.20
12 Drawer 550 Cabinet	175 x 138 x 81mm	V557-3	£52.20
32 Mixed Drawer 550 Cabinet	*Mixed compartment	V550C-3	£52.20

\* 24x L175 x W69 x H37mm, 6x L175 x W92 x H59mm and 2x L175 x W277 x H59mm



### Cross Dividers

Description	Order	Pack Qty	Price £
Cross Divider for use with: V290-3 & V550-3	VV-00	10	£1.75
Cross Divider for use with: V291-3 & V551-3	VV-01 *	10	£1.85
Cross Divider for use with: V292-3 & V552-3	VV-02	10	£2.35
Cross Divider for use with: V294-3 & V554-3	VV-04 *	10	£2.45
Cross Divider for use with: V296-3 & V556-3	VV-06 *	10	£4.70
Cross Divider for use with: V297-3 & V557-3	VV-07	10	£3.85

### Spacemiser Turntable

Needing only 0.25 square metres of floorspace, this free-turning assembly holds twelve 550 Series Visible Storage Cabinets in three layers. Each layer contains four cabinets (ordered separately)

- Stores up to 4320 different items
- Ball bearing base
- Easy Assembly
- 400kg Load
- V12-550KIT includes 12 cabinets as shown



Spacemiser Carousel - (carousel only)  
550 x 550 x 1730mm  
V12-550

**£181.00**

Spacemiser Carousel - carousel complete with cabinets  
V12-550KIT

**£759.00**

Save on complete Kits

### Cabinet Stands and Trolley

- Stylish Design
- Space saving storage
- Can be used with any combination of 550mm cabinets
- Easy Assembly
- Epoxy Powder coated steel frame
- Single stand holds four cabinets, double holds eight
- 12mm laminated bottom shelf on trolley
- Cabinets ordered separately



Single Stand,  
420 x 760 x 1585mm  
VBS550L

**£222.00**



Double Stand,  
600 x 760 x 1585mm  
VBS550T

**£234.00**



Double Trolley,  
600 x 760 x 1700mm  
VBT550

**£278.00**

## Storage Bin Cabinets

From complete turntable kits to bin cabinets that can be wall mounted if required, finding and storing small parts has never been so easy.

These storage bin cabinets can be used in workshop, stores and other small parts applications.

- Simply choose your colour of storage bin.
- Clear, red, blue and grey
- Cabinets can be wall hung or free standing
- Can be vertically stacked
- Can be turntable mounted for space saving

### 300 Series Range

Overall Dimensions: 300 x 400 x 395mm

Description	Bin Colour	Bin Material	External Bin Size	Order	Price £
8 Bin 300 Cabinet	Clear	Polystyrene	D300 x W186 x H82mm	V0830-1	£87.00
8 Bin 300 Cabinet	Red	Polypropylene	D300 x W186 x H82mm	V0830-5	£87.00
8 Bin 300 Cabinet	Blue	Polypropylene	D300 x W186 x H82mm	V0830-6	£87.00
8 Bin 300 Cabinet	Grey	Polypropylene	D300 x W186 x H82mm	V0830-3	£87.00
16 Bin 300 Cabinet	Clear	Polystyrene	D300 x W92 x H82mm	V1630-1	£95.00
16 Bin 300 Cabinet	Red	Polypropylene	D300 x W92 x H82mm	V1630-5	£95.00
16 Bin 300 Cabinet	Blue	Polypropylene	D300 x W92 x H82mm	V1630-6	£95.00
16 Bin 300 Cabinet	Grey	Polypropylene	D300 x W92 x H82mm	V1630-3	£95.00



300 Range



400 Series Range



### 400 Series Range

Overall Dimensions: 400 x 400 x 395mm

Description	Bin Colour	Bin Material	External Bin Size	Order	Price £
8 Bin 400 Cabinet	Clear	Polystyrene	D400 x W186 x H82mm	V0840-1	£96.00
8 Bin 400 Cabinet	Red	Polypropylene	D400 x W186 x H82mm	V0840-5	£96.00
8 Bin 400 Cabinet	Blue	Polypropylene	D400 x W186 x H82mm	V0840-6	£96.00
8 Bin 400 Cabinet	Grey	Polypropylene	D400 x W186 x H82mm	V0840-3	£96.00
16 Bin 400 Cabinet	Clear	Polystyrene	D400 x W92 x H82mm	V1640-1	£110.00
16 Bin 400 Cabinet	Red	Polypropylene	D400 x W92 x H82mm	V1640-5	£110.00
16 Bin 400 Cabinet	Blue	Polypropylene	D400 x W92 x H82mm	V1640-6	£110.00
16 Bin 400 Cabinet	Grey	Polypropylene	D400 x W92 x H82mm	V1640-3	£110.00

### Turntable Assemblies

Compact storage systems for use in service, workshop, production and storage areas.

- Units hold 16 cabinets of 300 or 400mm depths
- Ball bearing base and dividers for 4 layers with each layer containing 4 cabinets
- Cabinets ordered separately
- Epoxy powder coated steel
- 800kg Load
- Turntable KIT's: Include 8 x 8 drawer and 8 x 16 drawer cabinets as shown.



Empty Turntable  
V16-300  
**£380.00**

Turntable with 16 x 300mm Bin  
Cabinets  
V16-300-KIT  
**£1726.00**

Empty Turntable  
V16-400  
**£414.00**

Turntable with 16 x 400mm Bin  
Cabinets  
V16-400-KIT  
**£1939.00**

Save  
on  
complete  
Kits

### Drawer Dividers

Add Cross Bin dividers to subdivide and segregate drawers. 300 series range holds a maximum of 4 per bin and 400 series range holds a maximum of 6 per bin.

#### Cross Dividers

Description	Order	Price £
92mm wide bin divider	VD-10	£3.80
186mm wide bin divider	VD-20	£6.60



### Retaining/Safety Bars

Cabinets for Mobile service and maintenance vehicles can be equipped with safety/ retaining bars. Set includes 4 pieces



Suitable for cabinets  
0830, 1630, 0840 & 1640  
V-A400  
**£10.60**

## Tilt Storage Bins

### Keep an eye on your stock levels

Tilt Bin containers help you organise and protect valuable components.

Ideal for medical supplies and equipment, small parts storage, fixings and a host of other applications

### Easy to view, quick to access

- Totally transparent
- Robust and scratch resistant
- Easily removed for transport or cleaning
- Stackable for use on desks, counters, shelving or workbenches
- Identification cards included
- Trolleys, units and wall mounts can be equipped with your choice of Tilt Bin sizes
- Mobile trolleys, single and double sided floor standing units and wall mounts are available - please call for details
- Each unit housed in a 600mm wide outer casing module
- Six size options



Size 9 - 9 units/module D51 x W601 x H75mm  
VSTVB9

£12.29

Size 6 - 6 units/module D75 x W601 x H110mm  
VSTVB6

£14.93

Size 5 - 5 units/module D110 x W601 x H160mm  
VSTVB5

£21.54

Size 4 - 4 units/module D137 x W601 x H208mm  
VSTVB4

£30.27

Size 3 - 3 units/module D163 x W601 x H243mm  
VSTVB3

£41.50

Size 2 - 2 units/module D246 x W601 x H354mm  
VSTVB2

£94.10

## Retaining Bars

- Keeps all boxes securely closed
- Ideal for vans or mobile trolleys
- Easily fitted to any casing set
- Manufactured from strong metal rod



Retaining Bar for Size 9 units  
VRTB009  
£2.50

Retaining Bar for Size 3, 4, 5 and 6 units  
VRTB326  
£2.50

## Tilt Bin Trolley

Trolley includes:

- 4 x Size 6 Bins
- 2 x Size 5 Bins
- 2 x Size 4 Bins
- 2 x Size 3 Bins
- 2 x Size 2 Bins

Tilt Bin Trolley  
VTVB1

£770.10

