

## Who we are

A small family business established in 1997. We are:

- Quick to respond and flexible, with excellent customer service
- If you can't find what you need, we will try to source it as we can custom make products through our supplier network
- Here is one of our range of brochures covering Wall Mounted Signs. We have brochures on various product ranges and are adding to them regularly
  - Ballot and Suggestion Boxes
  - Conference Supplies
  - Diaries
  - Floor Standing Signage
  - Desk and Counter Top Signage
  - Lanyard Trees
  - Notebooks

## Contact Us

Please make contact with us for further information:

Louise Whyte  
Stablecrot Conference Products Ltd  
Kinninghall Farm House  
Cavers  
Hawick TD9 8LH

Phone: 01450 373373  
Email: [louise@stablecrot.com](mailto:louise@stablecrot.com)  
Web: [www.stablecrot.com](http://www.stablecrot.com)

# Wall Mounted Signs & Data Holders



**STABLECROFT CONFERENCE  
PRODUCTS LTD**

# Wall Mounted Signs

## 7 Tier Newspaper Rack Black Metal £47.74



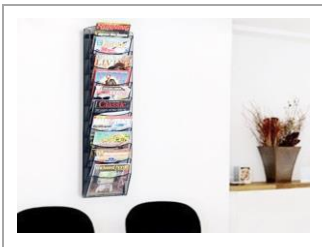
Height: 552mm  
Width: 241mm  
Depth: 51mm  
Powder coated black magazine or newspaper rack for offices venues surgeries. BHW552

## A4 Magazine Rack 5 Pockets £43.00



Height: 729mm  
Width: 260mm  
Depth: 95mm  
Curved black mesh newspaper rack, pockets 20mm deep, ideal for magazines brochures in receptions, waiting rooms, at events BHW1260

## A4 Magazine Holder 10 Pockets £62.00



Height: 1280mm  
Width: 260mm  
Depth: 95mm 3kg weight  
High capacity black curved mesh newspaper rack, pockets 20mm deep, ideal for magazines brochures in foyers, waiting rooms, receptions or at events and exhibitions BHW1280

# Wall Mounted Signs

## White or Grey A5 Leaflet Rack 4 Pockets £45.50



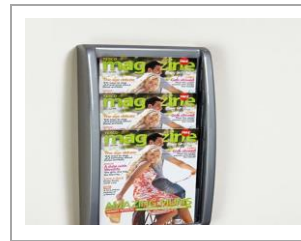
Height: 521mm  
Width: 184mm  
Depth: 83mm  
Plastic curved leaflet holder four A5 clear pockets, lightweight but durable, easy to move and wall mount BHW184W/BHW184G

## Grey or White A4 Poster Rack 6 Pockets £58.50



Height: 521mm  
Width: 502mm  
Depth: 83mm  
Plastic curved leaflet holder six A4 clear pockets, 2 x 3 side by side, lightweight but durable, easy to move and wall mount BHW502W/BHW502G

## A4 Brochure Holder Wall Mounted £54.00



Height: 521mm  
Width: 267mm  
Depth: 83mm  
Plastic curved leaflet holder three A4 clear pockets, lightweight but durable, easy to move and wall mount, grey only. BHW267G

# Wall Mounted Signs

## A4 Wire Brochure Holder 3 Pocket £15.50



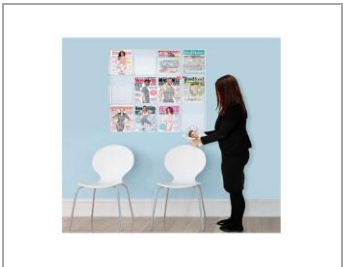
Height: 245mm  
Width: 240mm  
Depth: 125mm  
Three tier chrome wire open frame for brochures and leaflets. Wall mounted, modern stylish design. Ideal for any décor and venue. BHC450M

## A4 Wire Brochure Holder 21 Pocket £80.00



Height: 1120mm  
Width: 780mm  
Depth: 155mm  
Seven tier chrome wire open frame for brochures and leaflets. Wall mounted, 21 pockets, huge capacity, modern stylish design. Ideal for any décor and venue. BHC470M

## A5 Leaflet Holder 12 Pocket £145.00



Height: 750mm  
Width: 750mm  
Shatterproof acrylic, 12 A5 portrait pockets set in single piece of acrylic, suitable for commercial use BHW12A5

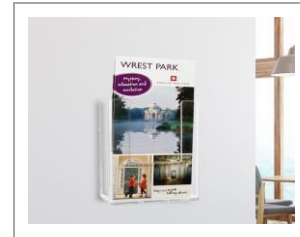
# Wall Mounted Signs

## A4 6 Pocket Leaflet Holder Acrylic £145.00



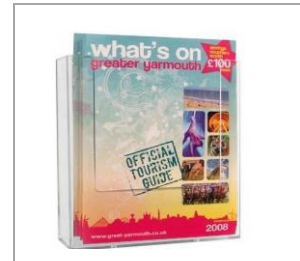
Height: 750mm  
Width: 630mm  
Shatterproof acrylic, 6 x A4 portrait pockets holds information up to 45mm thick, easy to install, all fixings supplied BHW6A4

## DL Leaflet Holder Wall Mounted £1.80



Height: 150mm  
Width: 115mm  
Pocket Depth: 32mm  
High quality acrylic leaflet display unit, holds data 210mm x 99mm up to 32mm thick, wall mounting fixings not supplied BHW110

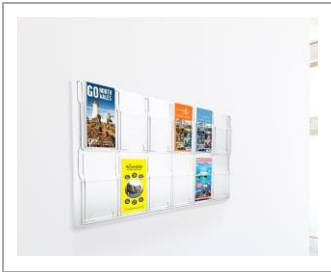
## Acrylic Leaflet Holder A5 £2.30



Height: 192mm  
Width: 165mm  
Depth: 35mm  
Pocket Depth: 32mm Width: 160mm  
Single pocket A5 leaflet holder, high quality acrylic, pre drilled fixing holes BHW160

# Wall Mounted Signs

## DL 1/3 A4 12 Pocket Leaflet Holder £110.00



Height: 518mm  
Width: 762mm  
Depth: 51mm  
Pocket Depth: 45mm  
Clear acrylic 12 pocket leaflet display unit, holds 1/3 A4 (DL) easy to install, shatterproof acrylic. BHW12DL

# Wall Mounted Signs

## A4 Portrait Brochure Holder 3 Tier £13.85



Height: 505mm  
Width: 240mm  
Depth: 115mm  
Pocket Depth: 32mm  
Molded clear styrene, other sizes available, hang on wall hooks easy to install and load documents BHW3A4

## A4 Portrait Leaflet Holder 4 Tier £18.00



Height: 620mm  
Width: 240mm  
Depth: 150mm  
Pocket Depth: 32mm  
4 tier display unit in clear styrene, drilled fitting holes, A4 pocket, easy access and visibility BHW4A4

## Brochure Hold A4 Portrait Wall Mounted £4.00



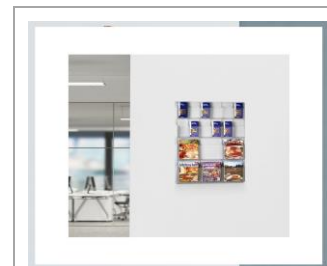
Height: 250mm  
Width: 240mm  
Pocket Depth: 32mm Width: 230mm  
Clear styrene, A4 size single pocket, mounting holes ready to fit, other sizes and styles available. BHW3A4

## Wall Mounted 3 Tier A5 Leaflet Unit £7.75



Height: 385mm  
Width: 165mm  
Depth: 105mm Pocket Depth: 32mm  
3 tier A5 leaflet unit, clear acrylic with fitting holes for wall mounting, fully assembled BHW3A5

## 12 DL 6 A4 Pockets Brochure Holder £165.00



Height: 1125mm  
Width: 750mm  
6 A4 and 12 DL (1/3 A4) clear shatterproof acrylic pockets, hold data up to 45mm thick. Space saving eye catching transparent display unit, all fittings supplied. BHW126

# Wall Mounted Signs

## 6 DL 3 A4 Pockets Brochure Holder £120.00



Height: 572mm  
Width: 762mm  
Depth: 51mm  
Stylish acrylic multi pocket wall mounted display unit, 6 DL and 3 A4 clear acrylic pockets, holds data up to 45mm thick. BWA630

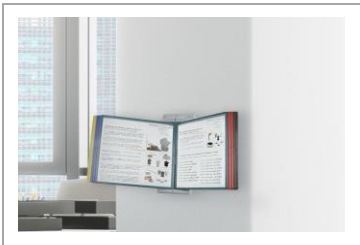
# Wall Mounted Signs

## A5 Leaflet Holder Landscape £3.75



Height: 132mm  
Width: 235mm  
Depth: 40mm  
Single sided A5 poster holder in clear acrylic, landscape, wall mounted. Easy to install. BHWLA5

## A4 Poster Flip Book Display £60.00



Height: 360mm  
Width: 160mm  
Depth: 395mm  
Plastic frame with 10 A4 deep pockets, which flip through, ideal for menus, brochures, holds up to 20 A4 items. LHWA410

## A6 Leaflet Holder Portrait £3.00



Height: 120mm  
Width: 118mm  
Depth: 40mm  
Pocket Depth: 35mm  
Clear acrylic wall mounted A6 brochure holder, holds data up to 35mm thick, also available in A5 and A4. BHWPA6

## A4 Brochure Holder Landscape £6.00



Height: 186mm  
Width: 340mm  
Depth: 38mm  
Wall mounted clear styrene A4 landscape brochure or leaflet holder. BHW330

## A4 Metallic Finish Brochure Holder £42.00



Height: 620mm  
Width: 390mm  
Pocket Depth: 130mm by 230mm  
A4 steel powder coated, 5 pocket brochure holder BHW620

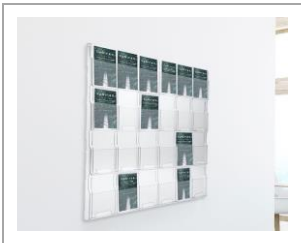
# Wall Mounted Signs

## A4 Brochure Holder 9 Pocket £150.00



Height: 934mm  
Width: 762mm  
Depth: 51mm  
Acrylic wall mounted brochure holder, 9 pockets in A4, holds data up to 45mm thick, supplied fully assembled ready to hang. BHW9A4

## DL Leaflet Holder 24 Pocket £165.00



Height: 1041mm  
Width: 762mm  
Depth: 51mm  
24 DL pocket wall mounted display unit, 45mm content depth, one piece ready to hang, space saving. BHW224DL

## Wall Mounted A4 Holder Black Mesh £10.00



Height: 229mm  
Width: 381mm  
Depth: 75mm  
Wall mounted A4 black mesh booklet holder. Powder coated metal, supplied with wall fixings. BHC940M

# Wall Mounted Signs

## A4 Brochure Holder 2 Tier Wall Mounted £9.55



Height: 385mm  
Width: 240mm  
Depth: 32mm  
High quality styrene 2 tier A4 holder, pockets hold data up to 32mm thick, great value and quality BHW2A4

## A4 Portrait Brochure Holder Outdoor £16.45



Height: 320mm  
Width: 230mm  
Depth: 43mm  
Outdoor wall mounted, ventilated via bottom of unit, protective frosted lid, clear styrene sides, BHEA4

## A5 Portrait Leaflet Holder Outdoor £12.00

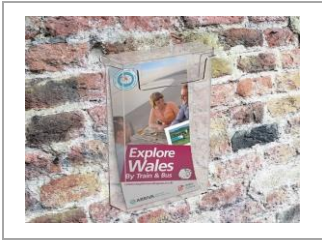


Height: 220mm  
Width: 160mm  
Depth: 35mm  
Outdoor leaflet holder in A5, frosted lid with Please Take One embossed, clear front and sides, ventilation via base, waterproof. BHEA5



# Wall Mounted Signs

## DL Portrait Outdoor Brochure Holder £5.75



Height: 220mm  
Width: 110mm  
Depth: 30mm  
Made in clear styrene, wall mounted, fixings not included, ventilation holes to protect contents, lift up lid, easy to view or access contents. BHEDL

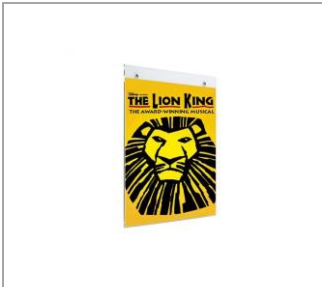
# Wall Mounted Signs

## Poster Holder A4 Portrait £3.95



Height: 323mm  
Width: 212mm  
Depth: 6mm  
Poster holder A4 portrait, 2mm thick clear acrylic, stylish minimalist, lightweight for wall mounting, easy to changeover data, other sizes available. SHA4PS

## Wall Mounted Poster Display A5 £2.50



Height: 238mm  
Width: 150mm  
Depth: 7mm  
A5 clear acrylic wall mounted poster display unit, easy to load, 2mm thick acrylic, lightweight to wall mount, other sizes available. SHA5PS

## Poster Holder Acrylic A3 Wall Mounted £13.67



Height: 445mm  
Width: 200mm  
Depth: 7mm  
A3 format 2mm thick acrylic poster or picture holder, crystal clear, lightweight, easy to wall mount. Also available in A4 and A5 SHA3PS

## Wall Mounted Poster A4 Landscape £3.95



Height: 210mm  
Width: 297mm  
Depth: 10mm  
2mm thick clear acrylic wall mounted poster display, clean lines, shows off your material, lightweight in use. SHA4LW

## Acrylic Poster Wall Display A1 £145.00



Height: 941mm  
Width: 694mm  
Depth: 42mm  
A1 size wall mounted poster holder, 5mm thick clear acrylic, can be used portrait or landscape, minimalist style does not detract from your images. WMPA1

# Wall Mounted Signs

## Wall Mounted Sign Holder A4 £3.35



Height: 297mm  
Width: 210mm  
Depth: 215mm  
A4 portrait sign holder clear acrylic, easy to load. Adhere to wall surfaces using self adhesive pads. Ideal for posters price lists signage. SHA4PW

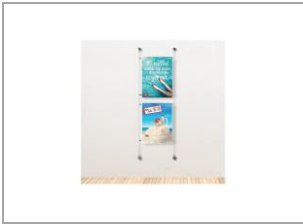
# Wall Mounted Signs

## A3 Acrylic Poster Display Portrait £32.00



Height: 420mm  
Width: 297mm  
Acrylic poster holder, landscape, complete with anodised fittings, stylish fitment rounded corners, clear quality acrylic A3 portrait format. KMA3P

## Twin A3 Acrylic Poster Kit Portrait £90.00



Acrylic Pockets: A3  
Cable Length: 3m  
Width: 297mm  
Twin A3 suspended poster unit, makes an eye-catching wall display, chrome cables and two acrylic poster pockets. Ideal estate and travel agents. KW2A3

## A3 Acrylic Poster Display Landscape £32.00



Height: 297mm  
Width: 420mm  
Acrylic poster holder, landscape, complete with anodised fittings, stylish fitment rounded corners, clear quality acrylic, A3 landscape format. KMA3L

## Triple A4 Acrylic Poster Kit £80.00



Acrylic Pockets: A4  
Cable Length: 3m  
Width: 210mm  
Triple A4 suspended poster unit, makes an eye-catching wall display, chrome cables and two acrylic poster pockets. Ideal estate and travel agents KW3A4L

## Outdoor Leaflet Holder £8.70-£23.40



Height: 45-315mm  
Width: 95-240mm  
Depth: 25-50mm  
Clear styrene outdoor sign with auto close lid, 4 sizes Business Card, A4, A5, 1/3 A4. SD10



# Wall Mounted Signs

## A2 Acrylic Poster Holder Landscape £45.00



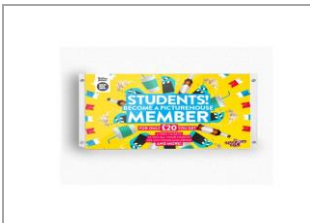
Height: 420mm  
Width: 594mm  
Acrylic poster holder, complete with anodised silver fittings, stylish fitment rounded corners, clear quality acrylic in A2 format in landscape. KMA2L

## A2 Acrylic Poster Holder Portrait £45.00



Height: 594mm  
Width: 420mm  
Acrylic poster holder, complete with anodised silver fittings, stylish fitment rounded corners, clear quality acrylic in A2 size in portrait format. KMA2P

## A0 Acrylic Poster Holder Landscape £160.00



Height: 594mm  
Width: 841mm  
Acrylic poster holder, complete with anodised silver fittings, stylish fitment rounded corners, clear quality acrylic in A1 format in landscape. KMAOL

# Wall Mounted Signs

## A1 Acrylic Poster Holder Portrait £86.00



Height: 841mm  
Width: 594mm  
Acrylic poster holder, complete with anodised silver fittings, stylish fitment rounded corners, clear quality acrylic in A1 size in portrait format. KMA1P

## 25mm Snap Frame 6 sizes £4.00-£38.50



Frame Width: 25mm  
Frame Depth: 20mm  
Aluminium snap frame, 8 colours, 6 sizes, A4, A5, A3, A2, A1 A0, 1mm thick max contents, indoor outdoor use, portrait or landscape. Choose from Black Blue Chrome Gold Red Silver Wood Effect. PFG

## Round Corners Silver Snap Frame £7.15-£18.15



Height: A4 A3 A2 A1  
Width: A4 A3 A2 A1  
Depth: 20mm  
Silver snap frame for wall mounting, 4 sizes, rounded corners, holds data up to 1mm thick, stylish and easy to load. PFG8

# Wall Mounted Signs

## Poster Sleeve Acrylic £1.30-£64.95



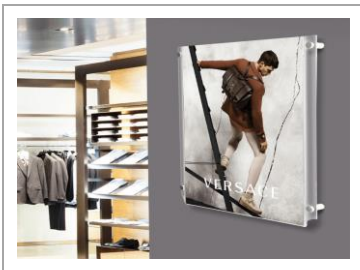
Height and Width: A1 A2 A3 1/3 A4  
A4 A5 A6 A7 A8  
Clear acrylic wall mounted poster sleeve, open on 3 sides, easy to load, portrait or landscape orientation, wall mount using adhesives pads or screws  
AS5

## Acrylic Poster Holder 3 Sizes £1.98-£6.81



Height A4 A5 A3  
Width: A4 A5 A3  
3 sizes A3 A4 A5 in both portrait and landscape, wall mounted, ideal for venues, stations, commercial applications, open 3 sides, easy to load. WPHN

## Acrylic Poster Kit Wall Mounted £14.15-£64.30



Height: A1 A2 A3 A4 A5  
Width: A1 A2 A3 A4 A5  
Top quality diamond clear acrylic wall poster kit, 5 sizes, silver satin finish wall mountings, 3mm thick acrylic, ideal for prestige products, locations and events.  
WHMK

# Wall Mounted Signs

## Acrylic Panel Poster Kit £19.00-£295.00



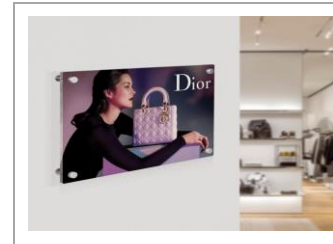
Height: A0 A1 A2 A3 A4 A5  
Width: A0 A1 A2 A3 A4 A5  
Depth: 67mm  
Modern high quality acrylic wall frame portrait or landscape, with satin silver pins to stand off from wall, 3-6mm thick acrylic WMP

## Lockable Poster Case Outdoor £40.00-£180.00



Height: A4 A3 A2 A1 A0 40x60" 20x30"  
Width: As above  
Frame Depth 45mm by 30mm  
Silver or black metal frame, outdoor or indoor, portrait recommended, landscape can be used, use waterproof paper. SLF

## Stand Off Acrylic Poster Frame £8.80-£178.00



Height: A0 A1 A2 A3 A4 A5 A6  
Width: As above  
Depth: 20mm  
5mm thick ultra clear acrylic, stands off wall 20mm, black silver or gold fittings, portrait or landscape, edge to edge print, indoor use only. ASP

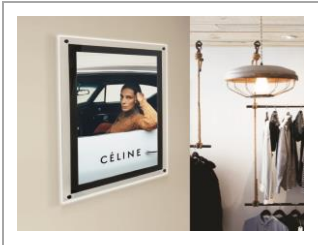
# Wall Mounted Signs

## Illuminated Poster Frame £97.15-£400.00



Height: A0 A1 A2 A3  
Width: A0 A1 A2 A3  
Frame thickness: 25mm  
Silver poster frame illuminated by LED background lights, supplied with 1 metre cable, charger ready to use. Ideal for retail and hospitality. ECLD

## Poster Frame LED Illuminated £99.25-£370.00



Height: A1 A2 A3 A4  
Width: A1 A2 A3 A4  
Silver or black framed indoor poster frame, with LED illumination, mains power, portrait or landscape orientation, bevelled edges enhance lit effect. WML

## Menu Display Case Illuminated £510.0-£685.00



Height: A4 A3  
Width: A4 A3  
Outdoor metal lockable display unit in copper, brass or polished steel finish, must be hard wired to supply, ideal for restaurants, hotels, splash proof, waterproof paper recommended. Not suitable seaside locations. LMC

# Wall Mounted Signs

## Slim Illuminated Poster Frame £134.00-£420.00



Height: A0 A1 A3 A3  
Width: A0 A1 A2 A3  
Depth: 19mm  
Very slim profile LED luminated poster frame, silver snap frame easy to open and change over, portrait or landscape. LEDA

## LED Light Box Super Slim £63.00-£91.45



Height: A4 or A3  
Width: A4 or A3  
Black ultra slim light box, mains power, landscape or portrait, ideal for restaurants bars retailers, for menus, graphics. Counter top or wall mounted, all fixings supplied. LPH

## Outdoor Poster Frame LED Lit £485.00-£958.00



Height: A0 A1 A2  
Width: As above  
Weatherproof to IP65, lockable frame, ideal for outside cinemas and other venues, easy to change over contents, three sizes, plug in to electric supply SLF5

# Wall Mounted Signs

## Black Framed LED Poster Holder £91.45



Height: A3  
Width: A3  
Frame thickness: 25mm  
Black framed poster holder lit by LED, A3 size only, plugged into mains, also available in counter top version to coordinate graphics throughout venue or offices. MPL

# Wall Mounted Signs

## A1 Poster Holder with Keyholes £64.00



Height: Portrait 840mm Landscape 590mm  
Width: Portrait 590mm Landscape 840mm  
3mm thick acrylic poster holder with concealed keyholes, A1 size only, portrait or landscape, side loading APHN

## Fire Resistant Snap Frame £14.00-£70.75



Height: A0 A1 A2 A3 A4  
Width: A0 A1 A2 A3 A4  
Silver framed fire-resistant heavy-duty snap frame. Aluminium frame heavy steel back panel, fire resistant non glare cover, complies with modern fire regulations so can be used in public sector buildings. FRF

## Silver Snap 15mm Wide Frame A5 A6 £4.80



Height: A5 or A6  
Width: A5 or A6  
15mm wide silver aluminium frame, can be wall mounted or counter top. Easy to change contents, 126mm wide by 169mm high and the A5 frame is 169mm wide by 231mm. Can be screwed to wall or adhered by double sided tape. PFG6

## Information Board Wall Mounted £165.00



Height: 675mm  
Width: 900mm  
Outdoor metal lockable display unit in copper, brass or polished steel finish, must be hard wired to supply, ideal for restaurants, hotels, splash proof, waterproof paper recommended. Not suitable seaside locations. IBD2

## Wall Mounted A4 Twin Poster Holder £63.00



Height: 380mm  
Width: 530mm  
Holds two A4 posters side by side in a clear 5mm laser cut and polished acrylic frame with a silver stand-off border, stands 25mm from wall, easy to load. IBH2

# Wall Mounted Signs

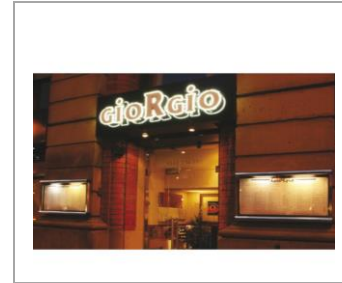
## Curved Poster Lightbox Display £106-£185.00



Height: A1 A2 or A3  
Width: A1 A2 or A3  
Weight: 3kg 6kg 11.3kg  
Curved lightbox silver aluminium frame, 3 sizes. Light is evenly diffused, keyholes for wall mounting LBO12

# Wall Mounted Signs

## Menu Case Wall Mounted Illuminated £64.00



Height: A2 A3 A4 2xA4 3xA4 4xA4 6xA4  
Width: A2 A3 A4 2xA4 3xA4 4xA4 6xA4  
Landscape or portrait illuminated or unlit. Polished silver or gold finish. DS307

## Hanging Lightbox Double Sided £133-£410.00



Height: A1 A2 A3 A4  
Width: A1 A2 A3 A4  
Silver suspended double sided lightbox, very slim profile 28mm deep. Portrait format only, can be suspended in shop windows or venues. LBO06F

## Restaurant Menu Case Battery Operated £POA



Height: A2 A3 3x A4 6 x A4  
Width: A2 A3 3x A4 6 x A4  
Outdoor menu or information box, illuminated by battery, finished in gold for silver, ideal for pop ups, outdoor events, festivals, temporary installations, long life batteries DS306

## Window or Wall Mounted Menu Case £225-£590



Height: A2 A3 A4 2 x A4 3 x A4 6 x A4  
Width: A2 A3 A4 2 x A4 3 x A4 6 x A4  
Wide choice of sizes portrait or landscape, illuminated or unlit. Weatherproof, lockable, easy to change over, ideal for bars, restaurants hotels. DS305

## LED Poster Light Box A3 A4 £98.20-£155.60



Height: A4 A3  
Width: A4 A3  
Ultra slim light box very bright LED, portrait or landscape, easy to load, economic to run, ideal for posters, menus CLB009