



# 9000 Series

## 900 Series Analyzers and Controllers

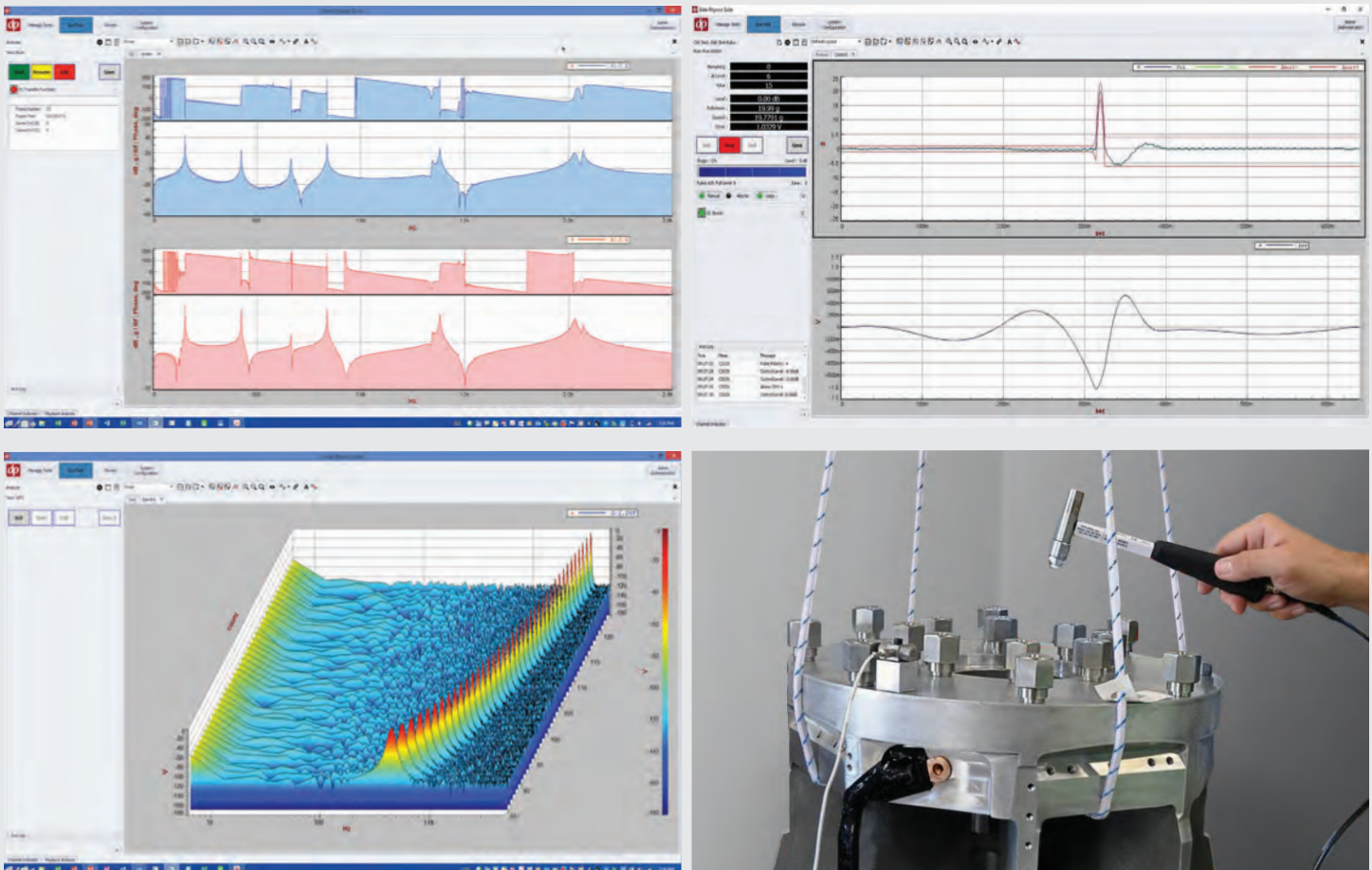
Whether you need comprehensive vibration control, intelligent signal analysis, or an all-in-one solution, the 900 Series delivers – with a new, distributed real-time signal processing engine for extraordinary dynamic testing performance. Leveraging advanced, scalable hardware and an intuitive software environment, users can now tackle the most challenging of test scenarios without compromising ease-of-use or accuracy.

Applications include:

- Vibration shaker control
- Structural and modal analysis
- Acoustic analysis
- Rotating machinery
- General vibration analysis

Delivering exceptional dynamic range and phase accuracy, Abacus 900 hardware offers users key new benefits such as flexible input/output channel configuration and local storage on each DSP card. For large tests and network applications, distributed data acquisition and signal processing conveniently enable remote and autonomous operation.

New SignalCalc 900 software greatly simplifies and enhances the user experience. A single, easy-to-use environment and relational database facilitate efficient management of testing, analysis, and reporting. Powerful new features such as Multi-Measurement and user-defined Math Channels enable even more real-time testing capability.



## Abacus 900 Series Hardware: Accurate, Portable, Modular

Compact and rugged, Abacus 900 hardware is designed for demanding field applications. With a modular, Gigabit Ethernet architecture, the 900 Series expands to over 1,000 channels. Systems are modular with six input/output channels per card. Each card includes on-board real-time DSP processors. In addition, each chassis has local storage to save both raw time histories and processed signals. With dedicated processors and local data storage, the system is easily expanded to support large tests – without compromising performance.



# 901

The 901 is an ultra-portable system well-suited for field use. Multiple systems can be combined for larger tests.

- Six input/output channels
- Passive cooling eliminates fan noise
- Power over Ethernet
- Remote and autonomous operation

# 906

The 906 is a compact, durable system for both lab and field applications. Multiple 906 and 901 systems can be combined to create larger systems.

- Up to 36 inputs/outputs per chassis
- Quiet mode for acoustic applications
- Flexible input/output configuration



### Hardware Summary

- Six channels per card, four dedicated inputs and two reconfigurable Flex Channels
- Flex Channels can be user-configured as inputs, outputs, or tachometers
- Large distributed systems are easily realized
- Multiple systems can be placed with up to 100 m between units
- Under all conditions, synchronized acquisition to within 40 nS
- Test data can be stored on the Abacus, host PC, or independent data server

### Inputs

- 24-bit sigma delta converter with up to 150 dB dynamic range
- 80 kHz of alias-free bandwidth
- Up to 216 kSamples/sec
- Channel-to-channel phase accuracy better than 0.5 deg at 40 kHz

### Outputs

- 24-bit Sigma Delta
- Sampling: up to 216 kSample/s

### Tachometers

- Signal frequency: DC to 500 kHz
- Programmable: Threshold, Hysteresis, Hold-Off, Pre-Scaler, Polarity



# Testing Made Easier Using SignalCalc 900 Series Software

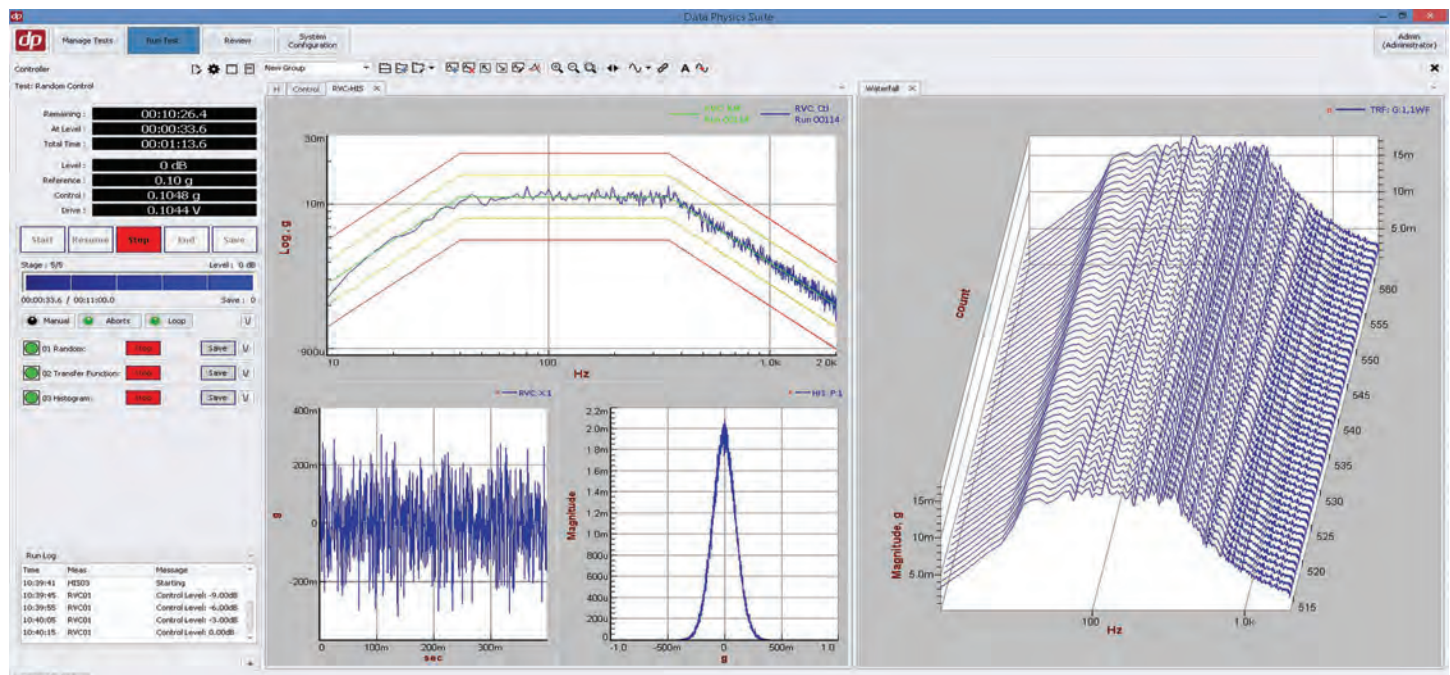
The 900 Series system is driven by an all-new generation of Data Physics software for both control and analysis. While operation is familiar to existing Data Physics users, SignalCalc 900 software brings advanced features that streamline testing and take advantage of the 900 Series' exceptional distributed signal processing performance.

## Integrated User Interface

A single, easy-to-use software environment built on a relational database structure makes the process of defining a test, making measurements, analyzing data, and generating high-quality reports easier than ever before.

## Multiple Simultaneous Measurements

SignalCalc 900 Series software supports multiple simultaneous dynamic signal measurement in real time, leveraging powerful onboard signal processing. Simultaneous measurements simplify testing and shorten test time by combining measurements such as FFT, correlation, and order analysis in a single test. Each measurement can be triggered independently either by signal event or manual input. This also enables a single Abacus 900 Series front-end to serve as both analyzer and controller, with multiple analyzer measurements running concurrently with control of a vibration test profile such as random, sine, or shock.



## Signal Math

Create custom measurement signals by applying math operations directly to signals in real time. Functions include integration, differentiation, addition, subtraction, multiplication, division, matrix operations, filters (low pass, high pass, and band pass), Fourier transform, and inverse Fourier transform. Create virtual channels using mathematical operators.

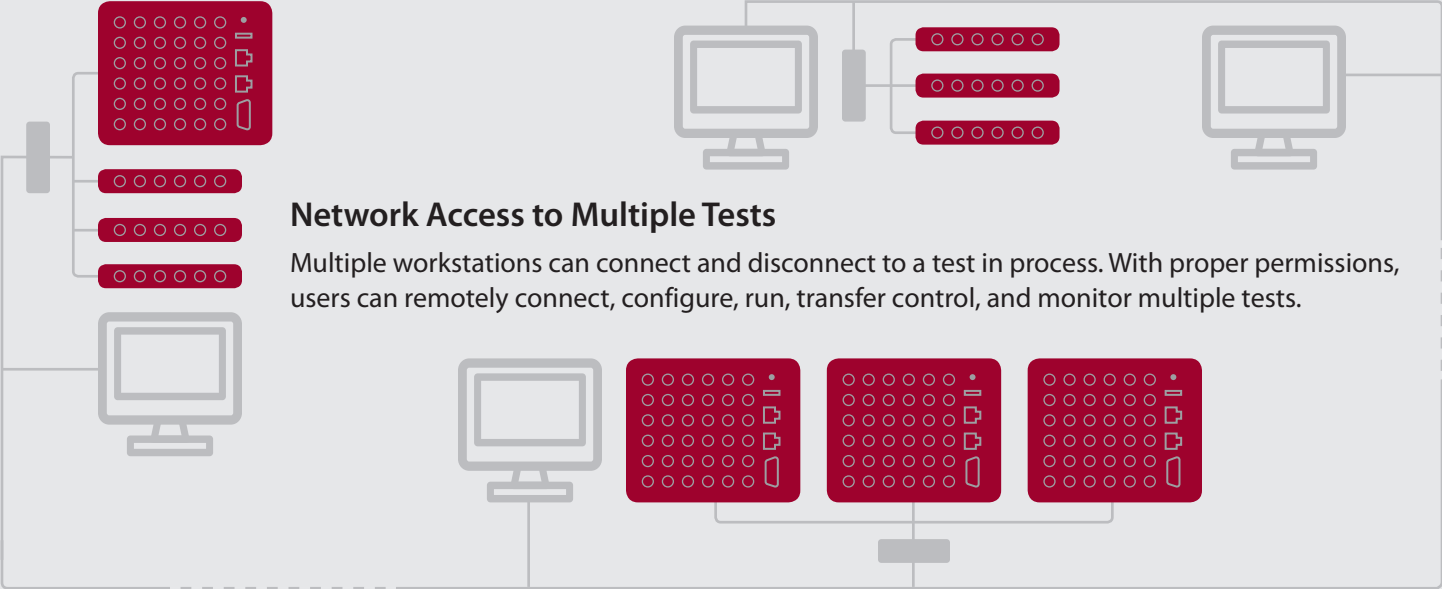
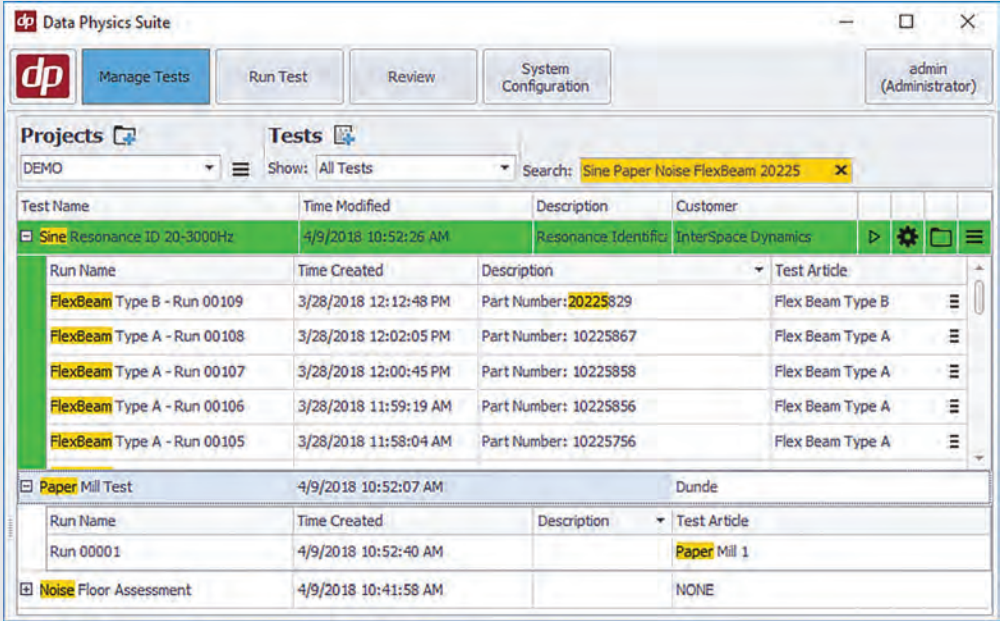
## Flexible Reporting

Custom graphs support display of both measurements and test attributes. Reports update automatically with live data and can be easily generated after each test.

## Efficient Test Management

SignalCalc 900 Series software is built on a relational database with a Test Manager interface that makes management of tests more efficient than ever before.

- Automatically saved and indexed test setups
- Flexible search criteria
- Easy retrieval, editing, and export of test setups and data
- Replay of recorded data
- Analysis and comparison of data from any type of test



### Network Access to Multiple Tests

Multiple workstations can connect and disconnect to a test in process. With proper permissions, users can remotely connect, configure, run, transfer control, and monitor multiple tests.

### Modular, Versatile, Expandable

Abacus 900 Series distributed data Architecture is designed to support a wide variety of configurations and advanced capabilities. With a modular Ethernet-based architecture, the 900 Series can be expanded to over 1,000 channels. Multiple 901 and 906 chassis can be combined into a single system. A shared clock signal guarantees synchronized measurements between chassis. In all configurations, the

channel-to-channel phase accuracy is better than 0.5 deg at 40 kHz. Chassis can be located up to 100 meters apart. The system's network performance is resilient and is designed to operate across an existing local network. With distributed signal processing and data storage, the system does not require centralized processing control during test operation; the client PC can even disconnect from the system without interrupting the test.

# Abacus 900 Series Hardware Specifications

## Inputs

- ADC Resolution: 24 bits Sigma Delta
- Sample Resolution (Digital Filtering/Processing): 32 bits floating point
- Maximum Sampling Frequency: 216 kSamples/s
- Coupling: AC/DC, DIFF/SE, ICP, TEDS
- Input Impedance: 1 MOhm + 1MOhm (DIFF), 1MOhm + 50 Ohm (SE)
- Digital Anti-Alias Filter: -100 dB (0 to 40 kHz), -90 dB (40 to 90 kHz)
- Analog Anti-Alias: 3 poles
- Dynamic Range: 120 to 150 dB
- Input Ranges: 0.1V, 0.31V, 1V, 3.1V, 10V, 31V
- CMMR: 60 dB
- Max Voltage: 80 V max/1 MOhm; 5 V max/50 Ohm
- Amplitude Accuracy: +/-0.2% FS at 1 kHz for 0 deg < T < 55 deg C
- Frequency Response: +/- 0.5% 0 to 40 kHz, +/- 1% 40 to 80 kHz, +/- 2% 60 to 80 kHz on 30V Range
- Phase Accuracy: 0.5 deg at 40 kHz
- THD+N: 90 dB min @ 1kHz
- Offset: +/- 0.1% FS Max (0.5% Max on .1V Range)
- Crosstalk between inputs: -90 dB
- Crosstalk between inputs and outputs: -90dB
- Frequency Accuracy: 25 ppm

## Outputs

- DAC: 24 bits Sigma Delta
- Sampling: up to 216 kSample/s
- Ranges: 1V, 2V, 5V, 10V; SE
- Output Current: 10 mA
- THD: 90 dB
- Reconstruction Filter: 100dB Stop Band

## Tachometers

- Input Ranges: 0.1V, 0.31V, 1V, 3.1V, 10V, 31V
- Max Voltage: 80 V /1 MOhm; 5 V/50 Ohm
- Coupling: AC/DC/DIFF/SE
- Signal Frequency: DC to 500 kHz
- Programmable: Threshold, Hysteresis, Hold-Off, Pre-Scaler, Polarity

## Physical Measurements

### 901

Length:	7.32 in.	18.60 cm
Width:	4.64 in.	11.78 cm
Height:	1.40 in.	3.57 cm

### 906

Length:	10.00 in.	25.40 cm	(for the primary case)
	11.64 in.	29.57 cm	(including handles)
Width:	8.40 in.	21.34 cm	
Height:	6.92 in.	17.58 cm	(with feet folded)

**Corporate Headquarters**  
2480 N. 1st Street, Suite 100  
San Jose, CA 95131, USA  
+1.408.437.0100  
dataphysics.com

**USA Shaker  
Design & Manufacturing**  
9031 Pulsar Court  
Corona, CA 92883, USA

**Asia Pacific**  
Rm 2005 Minhang Plaza  
18 Xinqiao Road, Pudong  
201206 Shanghai, China  
+86.21.3382.0671  
+1.831.655.6677

**Data Physics (France) S.A.**  
142 Avenue Joseph Kessel  
78960 Voisins le Bretonneux  
France  
+33(0)1.39.30.50.60

**Data Physics (Deutschland)  
GmbH**  
Business Center  
Im Gewerbepark C 25  
93059 Regensburg  
Deutschland  
+49(0)941.640.90.734

**Data Physics (UK) Ltd.**  
South Road, Hailsham  
East Sussex, BN27 3JJ, UK  
+44(0)1323.846464



SignalCalc and SignalStar are registered trademarks of Data Physics Corporation. All other trademarks are the property of their respective holders. Descriptions and specifications in this brochure are subject to change without notice.