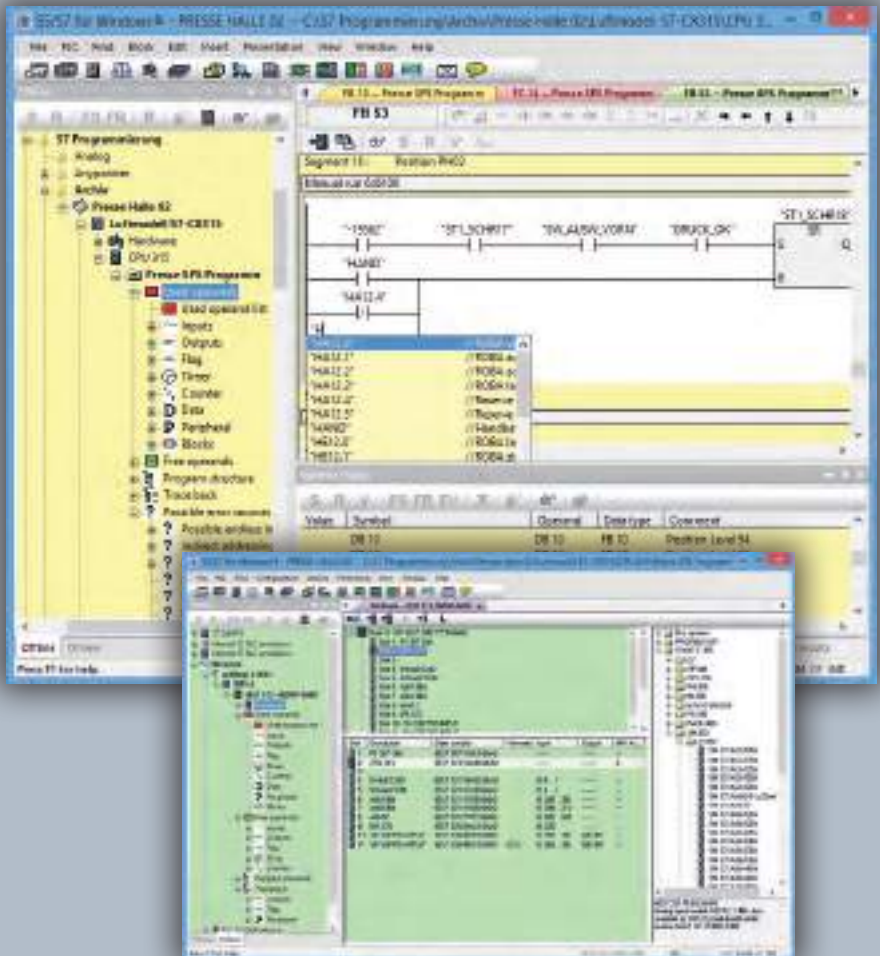


## **Programming tool designed for programming the Siemens PLC family SIMATIC S5 with STEP 5**

- ▶ Windows® 10 support
- ▶ Can be combined with S7 for Windows® or runs stand-alone
- ▶ Multiple segments can be shown in the status display
- ▶ Statement List (STL), Function Block Diagram (SFC) and Ladder Diagram (LAD) presentations
- ▶ Projects are compatible to the original Siemens programming tool
- ▶ STEP5-projects can be edited directly without im-/export
- ▶ Integrated S5-Simulation
- ▶ Comfortable block comparison (BlockDiff)
- ▶ Emulator to call original COM-Packages
- ▶ Online on SIMATIC S5 via SINEC L2 with the IBH Link S7++
- ▶ Graphical Step Sequence Programming
- ▶ Fully automated debugging without program adaption
- ▶ Oscilloscope feature
- ▶ OsciCAM®: analyze motion processes through synchronisation of previously recorded videos and process signals
- ▶ Statusrecorder: dynamic procedures can be explored by subsequently analysis of the block status frame by frame
- ▶ LogView: graphical representation and synchronisation of measurements
- ▶ IntelliSense: intelligent input assistance
- ▶ Driver for Siemens USB S5/S7 Prommer available

# S7 for Windows®



[www.ibhsoftec.com/S7W-Eng](http://www.ibhsoftec.com/S7W-Eng)

## **Programming tool for the SIMATIC S7-300 and S7-400 series**

- ▶ Windows® 10 support
- ▶ Can be combined with S5 for Windows® or runs stand-alone
- ▶ Complete S7 instruction set implemented in the presentations Statement List (STL), Function Block Diagram (SFC) and Ladder Diagram (LAD)
- ▶ Status of variable views and symbolic tables
- ▶ STEP7-projects can be edited directly without im-/export
- ▶ Conversion from S5- to S7-programs
- ▶ Integrated S7-Simulation
- ▶ Comfortable block comparison (BlockDiff)
- ▶ Fully automated debugging without program adaption
- ▶ Oscilloscope feature
- ▶ OsciCAM®: analyze motion processes through synchronisation of previously recorded videos and process signals
- ▶ Statusrecorder: dynamic procedures can be explored by subsequently analysis of the block status frame by frame
- ▶ LogView: graphical representation and synchronisation of measurements
- ▶ IntelliSense: intelligent input assistance
- ▶ Hardware configuration
- ▶ Hardware catalogue can be extended with GSD-files
- ▶ Hardware catalogue can be updated over internet
- ▶ Driver for Siemens USB S5/S7 Prommer available

# SoftPLC S7-315/S7-416



[www.ibhsofttec.com/SoftPLC-416-Eng](http://www.ibhsofttec.com/SoftPLC-416-Eng)

**Product number S7-315 #1300**  
**Product number S7-416 #1302**

## SoftPLC S7

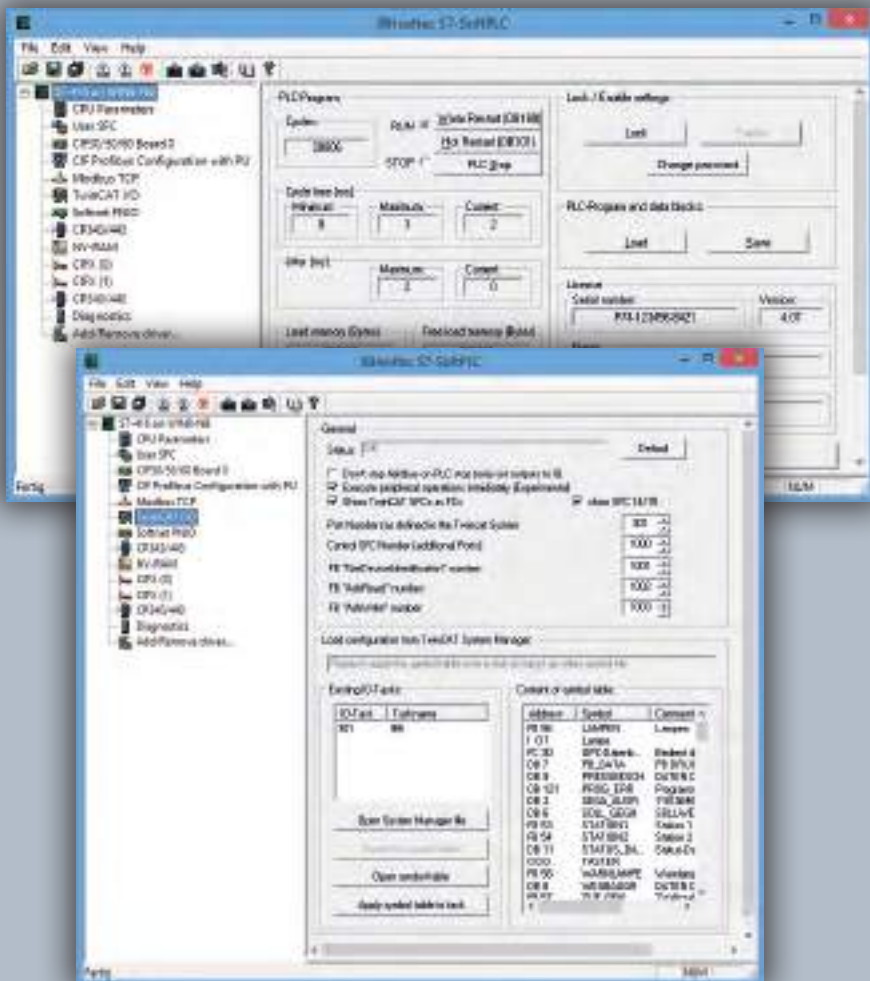
The IBH SoftPLC S7-315 / S7-416 executes a program in the same manner as a hardware PLC. The advantage of executing a PLC program this way is, that the PLC status can be displayed in real time. Since the Soft PLC behaves like an original SIMATIC PLC, the programming tools S7 for Windows® and STEP 7 can be used. The SoftPLC allows process monitoring, operation and control from one hardware unit. The use of the Soft-PLC is especially useful if a PC for data collection, process visualization, programming, or any other reason needs to be used anyway. A SoftPLC solution eliminates the need for a hardware PLC and the corresponding communication processor.



Supported Fieldbussystems

Fieldbus card/-system	Hilscher	Beckhoff
Lightbus	–	✓
PROFIBUS	✓	✓
PROFINET I/O	✓	–
Interbus	✓	✓
DeviceNet	✓	✓
AS-i	✓	✓
CANopen	✓	✓
sercos	✓	✓
EtherCAT	✓	✓

# SoftPLC S7-315/S7-416



[www.ibhsoftec.com/SoftPLC-416-Eng](http://www.ibhsoftec.com/SoftPLC-416-Eng)

**Product number S7-315 #1300**

**Product number S7-416 #1302**

## SoftPLC S7

- ▶ Windows® 10 support
- ▶ Access to the field bus (e.g. PROFIBUS-DP, PROFINET, EtherCAT, etc...) with field bus master cards from Hilscher and Beckhoff or with standard I/O boards.
- ▶ Direct access with S7 for Windows®, OPC Server, STEP 7 or DLL
- ▶ Online functions possible using ISO-on-TCP (RFC1006), Modbus TCP, IBHNet driver or PROFIBUS
- ▶ PLC-PLC communication with various Ethernet protocols
- ▶ CP 343/443 emulation
- ▶ I/O monitor
- ▶ Display the diagnostic buffer without programming tool
- ▶ For our OEM-Customers the company Hilscher Gesellschaft für Systemautomation mbH provides our PLC kernel on the netX 500 Chip
- ▶ For our OEM-Customers a Windows CE version is available
- ▶ Also available as a pure Simulation PLC

**Product number S5-943 #1204**

## SoftPLC S5-943/S5-945

**Product number S5-945 #1206**

The SoftPLC is also available as S5 version. Since the SoftPLC behaves like an original SIMATIC PLC, the programming tools S5 for Windows® and STEP 5 can be used. Access to the field bus (e.g. PROFIBUS-DP, PROFINET, EtherCAT, etc...) can be made with field bus master cards from Hilscher and Beckhoff or with standard I/O boards.



**[www.ibhsoftec.com/SoftPLC-945-Eng](http://www.ibhsoftec.com/SoftPLC-945-Eng)**

# S7/S5-Interfaces

## **USB-S7 Adapter MPI, DP, PPI #20218**

For S7-200, S7-300 oder S7-400

- ▶ Integrated LCD-Display shows the transmission rate and MPI/ DP address
- ▶ Membrane keypad for the adapter configuration
- ▶ Powered by the PC, no power supply necessary



[www.ibhsoftec.com/USB-S7-Adapter-C-Eng](http://www.ibhsoftec.com/USB-S7-Adapter-C-Eng)



## **IBH USB-S5-Adapter #20220**

- ▶ Driver for S5 for Windows® and STEP 5 from V7.16 included
- ▶ Powered by the PC, no power supply necessary



[www.ibhsoftec.com/IBH-USB-S5-Adapter-Eng](http://www.ibhsoftec.com/IBH-USB-S5-Adapter-Eng)



## **IBH S5-Current loop converter #2020**

- ▶ For a serial connection between a PLC and a S5-PLC
- ▶ Fits the following PLCs: 90U, 95U, 100U, 101U, 115U, 135U und 155U



[www.ibhsoftec.com/IBH-RS232-S5-Adapter-Eng](http://www.ibhsoftec.com/IBH-RS232-S5-Adapter-Eng)





## **Constant Current Adapter for the IBH S5-Current loop converter #2042, #2044, #2046, #2048**

- ▶ For PLCs, that are not supplying the loop current (2 x 20mA), the Constant Current Adaptor is required to establish a connection.



[www.ibhsofttec.com/S5-Interface-Eng](http://www.ibhsofttec.com/S5-Interface-Eng)



## **USB S5/S7 Prommer (Siemens) #2008**

- ▶ The USB S5/S7 Prommer works together with S5/S7 for Windows®, STEP 5 and STEP 7. 64 Bit Driver for S5/S7 for Windows® available



[www.ibhsofttec.com/USB-S5S7-Prommer-S-Eng](http://www.ibhsofttec.com/USB-S5S7-Prommer-S-Eng)



Copyright: OsciCAM is a registered trademark of IBHsofttec Gesellschaft für Automatisierungstechnik mbH. Windows is a registered trademark of Microsoft Corporation. SIMATIC, S7-200, S7-300, S7-400, S7-1200, S7-1500, SINEC, TIA, CP 343, CP 443, SIEMENS LOGO!, HMI and STEP are registered trademarks of Siemens Aktiengesellschaft Berlin and München. AS-Interface is a registered trademark of Verein zur Förderung busfähiger Interfaces für binäre Aktuatoren und Sensoren e.V. CANopen is a registered trademark of CAN in AUTOMATION - International Users and Manufacturers Group e.V. Sercos is a registered trademark of SERCOS International e.V. EtherCAT and TwinCAT are registered trademarks of Beckhoff Automation GmbH. NetX is a registered trademark of Hilscher Gesellschaft für Systemautomation mbH. PACTware is a registered trademark of PACTware Consortium e.V. FieldCare is a registered trademark of Endress + Hauser Process Solutions AG.

# USB S5/S7 Prommer

Product number  
#2008

64 Bit Driver for the programming tool  
S5/S7 for Windows®



- ▶ S5 EPROM Modules
- ▶ S5 EEPROM Modules
- ▶ S5 Memory Cards
- ▶ S7 Memory Cards
- ▶ S7 Micro Memory Cards



[www.ibhsoftec.com/USB-S5S7-Prommer-S-Eng](http://www.ibhsoftec.com/USB-S5S7-Prommer-S-Eng)

## **S7-CX315/317 SD**

**Product number CX315 #3022**

**Product number CX317 #3024**

### **S7 compatible PLC for the complete Beckhoff CX8000 series**



The S7-CX SD cards turn an embedded PC of the Beckhoff CX8000 series into a S7 compatible PLC and allow the use of the reliable and flexible Beckhoff hardware.

- ▶ Including S7 for Windows® (Kit-Version)
- ▶ STEP7 compatible
- ▶ Full retentivity
- ▶ Ethernet CP
- ▶ EtherCAT
- ▶ Web server
- ▶ Modbus TCP Master / Slave

The S7-CX315 SD / S7-CX317 SD can be used with the complete CX8000 series. Next to EtherCAT, the fieldbus systems PROFIBUS, CANopen, RS232/RS485, PROFINET RT, EtherNet/IP and Sercos III are directly available on the device.



**[www.ibhsoftec.com/S7-CX315-SD-Eng](http://www.ibhsoftec.com/S7-CX315-SD-Eng)**



# International Distributors



## Australia

**I S Systems Pty. Ltd.**  
Tomago NSW 2322  
Tel. +61 2 4964 9548  
Fax +61 2 4964 9877

**ZI-ARGUS Pty. Ltd.**  
Silverwater NSW 2128  
Tel. +61 280 903 630  
Fax +61 280 903 649



## Austria

**ESA Elektro Automation**  
3322 Viehdorf  
Tel. +43 7472 63098  
Fax +43 7472 63098 20



## Belgium

**Rexel NV / SA**  
1731 Zellik  
Tel. +32 248248 48  
Fax +32 248248 49



## Brazil

**Orkan Informática**  
09726 Sao Bernado  
Tel. +55 11 412 56088  
Fax +55 11 412 58811



## China

**Shanghai Vape Ltd.**  
201200 Shanghai  
Tel. +86 21 61508196  
Fax +86 21 58341766



## Czech Rep.

**Merz s.r.o.**  
460 01 Liberec  
Tel. +420 485 100 272  
Fax +420 485 100 273

**SIDAT s.r.o.**  
158 00 Prag  
Tel. +420 257 187 911  
Fax +420 257 187 970



## Denmark

**PC SYS A/S**  
2600 Glostrup  
Tel. +45 4343 2929  
Fax +45 4343 2829



## Egypt

**Mas Trading**  
11431 Cairo  
Tel. +202 25242842  
Fax +202 25242842



## Finland

**Klinkmann Automation**  
00371 Helsinki  
Tel. +358 9540 4940  
Fax +358 9541 3541



## France

**Pantek Automation SA**  
77700 Marne La Vallée  
Tel. +33 16463 40 28  
Fax +33 16463 83 75

**YASKAWA**  
44860 Saint-Aignan  
Tel. +33 659 7277 67  
Fax +33 240 7541 47



## Great Britain

**Drawtrend Ltd.**  
Lancashire FY67LD  
Tel. +44 125 388 2158  
Fax +44 125 388 2158

**Que Associates Ltd.**  
Warwick CV34 4HU  
Tel. +44 1926 410 371



## Hungary

**AD-DA kft**  
1124 Budapest  
Tel. +36 1 214 0400  
Fax +36 1 214 0400



## India

**SWA SYSTEMS**  
560078 Bangalore  
Tel. +91 80 26663652  
Fax +91 80 26663652



## Indonesia

**PT TDS Technology**  
West Java 17510  
Tel. +62 21 8261 5966  
Fax +62 21 4622 8752



## Ireland

**DC Automation**  
Rathfarnham Dublin 14  
Tel. +353 1 4419187



## Italy

**iCon GmbH s.r.l.**  
33040 Vahrn  
Tel. +39 0472 2009 70  
Fax +39 0472 2009 62

**Telestar s.r.l.**  
28010 Vaprio d'Agogna  
Tel. +39 0321 966 788  
Fax +39 0321 996 281



## Japan

**Eifer Co.,Ltd.**  
323-0822 Tochigi  
Tel. +81 285377 005  
Fax +81 285377 573



## Malaysia

**Intotest Sdn Bhd**  
75250 Melaka  
Tel. +60 6 336 122 9  
Fax +60 6 336 122 8



## Namibia

**IAE cc**  
9000 Windhoek  
Tel. +264 61 30 53 13  
Fax +264 81 12464 10



## Netherlands

**Digitron Electronics**  
8734 GP Easternin  
Tel. +31 6 22012036  
Fax +31 847 580692



## New Zealand

**Horizon Technology Ltd.**  
Albany, Auckland  
Tel. +64 914 0066  
Fax +64 914 0055



## Norway

**Autic System A/S**  
3110 Tonsberg  
Tel. +47 333 009 50  
Fax +47 333 009 55



## Poland

**ENCON**  
54-620 Wroclaw  
Tel. +48 71 793 64 07  
Fax +48 71 793 64 08

**SMAGSTERON**  
52-015 Wroclaw  
Tel. +48 71 719 90 18  
Fax +48 71719 90 19

**STERCONTROL**  
53-238 Wroclaw  
Tel. +48 717 1990 09  
Fax +48 717 1990 11



## Russia

**Famaga Group**  
Moskau  
Tel. +7 495 268 04 80  
Fax +7 495 936 96 06

**Giesbrecht Technology**  
Moskau  
Tel. +7 496 75 59 320  
Fax +7 496 75 59 320



## Russia

**GT Sensorika**  
Sankt Petersburg  
Tel. +7 812 309 88 50  
Fax +7 812 309 88 50



## Singapore

**TDS Technology**  
729493 Singapore  
Tel. +65 6366 1661  
Fax +65 6362 1661



## Slovakia

**ControlSystem s.r.o**  
977 01 Brezno  
Tel. +421 48 6115900  
Fax +421 48 6111891



## Slovenia

**SMM proizvodni sistemi**  
2000 Maribor  
Tel. +386 2 450 23 00  
Fax +386 2 450 23 02



## South Africa

**RJ Connect cc**  
Ferdiale 2194  
Tel. +27 11 781 0777  
Fax +27 11 781 7204



## Spain

**AIN Consult España**  
28931 Mostoles  
Tel. +34 9 1613 0031  
Fax +34 9 1613 6506

**ER-SOFT S.A.**  
28231 Las Rozas  
Tel. +34 916 408 408  
Fax +34 916 408 409



## Sri Lanka

**IMA Control HAILD**  
Moratuwa (Colombo)  
Tel. +94 77 7709675  
Fax +94 76551121



## Swiss

**IndAC AG**  
4123 Allschwil  
Tel. +41 61 481 25 22  
Fax +41 61 481 25 23



## Sweden

**Germatech AB**  
55473 Jönköping  
Tel. +46 3634 6010  
Fax +46 3616 8262



## Thailand

**PS Union Progress Co.**  
10230 Ladprao  
Tel. +662 931 19945  
Fax +662 931 1989



## Turkey

**EMIKON LTD. STI.**  
34776 Y.Dudullu  
Tel. +90 216 420 83 45  
Fax +90 216 420 83 48

**ENDESIS**  
54000 Sakarya  
Tel. +90 264 2784366  
Fax +90 264 2784316



## Ukraine

**Giesbrecht Technology**  
24405 Winnitsa  
Tel. +38 04352 21 669  
Fax +38 04352 23 451



## USA

**Software Toolbox Inc.**  
Matthews, NC 28105  
Tel. +1 704 849 2773  
Fax +1 704 849 6388