



Known for Reliability
Since 1921

Fish Processing Band Saws

44SSFH-LP SERIES



(Design A)

Model 44SSFH-LP-PGF

Stainless Steel, Fixed Head, Low Profile,
Precision Gauge Fence for Frozen Fish Block
Portion Control Fish Products



(Design B)

Model 44SSFH-LP-FS-R

Stainless Steel, Fixed Head, Low Profile,
Fish Steaking/Retailing
(Shown with optional, Double Saw Guide Bar)

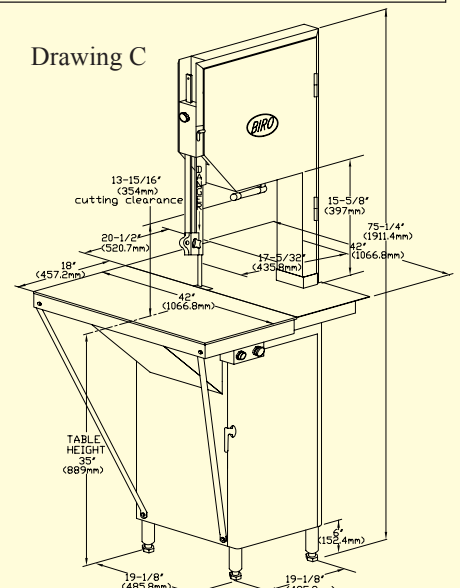
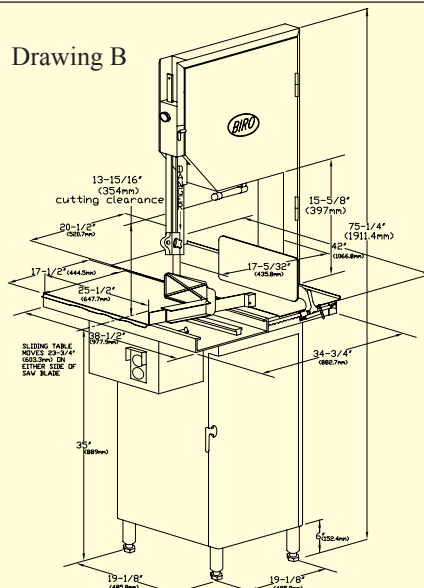
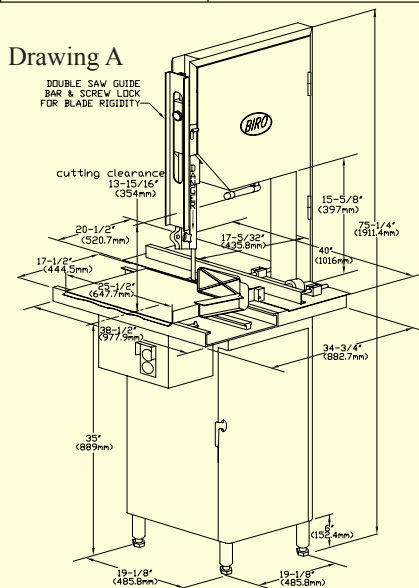
(Design C)

Model 44SSFH-LP-HDFFT

Stainless Steel, Fixed Head, Low Profile,
Heavy Duty Front Fixed Table
(see reverse side)

MODEL SPECIFICATIONS

| MODELS | A Model 44SSFH-LP-PGF | B Model 44SSFH-LP-FS-R | C Model 44SSFH-LP-HDFFT | | | | | | |
|-------------------------------|--|------------------------|-------------------------|---|---------------|-------|----------------|--------|--|
| Motors | HP | KW | TYPE | VOLTS | AMPS | HERTZ | PH | STATUS | STD = Standard EC = Extra Cost MR = Moisture Resistant |
| | 5 | 3.7 | MR | 208-220/440 | 15.7-14.8/7.9 | 60 | 3 | STD | |
| | 5 | 3.7 | MR | 575 | 5.9 | 60 | 3 | EC | |
| | 5 | 3.7 | MR | 220/380-415 | 17.8/10.3-9.4 | 50 | 3 | EC | |
| Construction | Stainless steel unitized base, head and door structure; legs, channel, assembly tables; some components non S.S. | | | | | | | | |
| Standard Eq. | Two saw blades • Operation and Safety manual • Safety wall poster • Safety end cut pusher plate (except fixed table saw) | | | | | | | | |
| Saw Blade | 135" (3429mm) L x 5/8" (16mm) W x .018 (.45mm) thick -hard tooth | | | 135" (3429mm) L x 5/8" (16mm) W x .022 (.56mm) thick -hard tooth | | | | | |
| Blade Guide | Upper and lower blade backup guide assemblies, with carbide long-life inserts, removable as an assembly | | | | | | | | |
| Blade Speed | Approx. 7000 (2133m) feet per minute | | | Approx. 4000 (1219m) feet per minute- higher f.p.m. blade speed available | | | | | |
| Blade Wheels | 18" (457mm) single flange, cast iron, nickel plating, upper wheel assembly removable - Opt. S.S. blade wheels available | | | | | | | | |
| Blade Guide Bars | Double (extra rigid) stainless steel saw guide bars | | | | | | | | |
| Blade Tension | Factory preset tension spring in housing with screw tensioning handle , located under upper wheel | | | | | | | | |
| Blade Cleaning Unit | Stainless steel body with long-life carbide guide inserts, steel saw cleaners, removable as a unit for easy cleaning (assembly also adjusted as a unit) | | | | | | | | |
| Bearings | Heavy duty tapered roller bearings used in upper saw wheel hub and lower bearing housing assembly | | | | | | | | |
| Dust Catch Pan | Deep rounded corners poly pan sealed off from other areas of base structure, accessible through hinged door | | | | | | | | |
| Drive System | Tension adjustable, non-slip, silent V-belt | | | | | | | | |
| Meat Carriage | 25½" (647mm) L x 17½" (444mm) W stainless steel with 8, 1-7/16" diameter; (36.5mm) stainless steel EZ-flow bearings | | | | | | Not applicable | | |
| Legs | Stainless steel welded legs with 4 adjustable leg bolt levelers | | | | | | | | |
| Motor Compartment | Sealed off from meat contact areas, easily accessible through removable panel door | | | | | | | | |
| Platter | Right rear platter stationary, left rear platter removable | | | Stainless steel rear platter, removable by releasing push-pull hold down rods | | | | | |
| Power Switch | Watertight magnetic with thermal overload and under voltage protection | | | | | | | | |
| Pusher Plate | Standard | | | | | | Not applicable | | |
| Meat Gauge Plate | Not applicable | | | Adjustable from 1/16" (1.6mm) to 6½" (165mm) locks in position; assembly removable for cleaning | | | Not applicable | | |
| Options (Extra Charge) | A,B,C - Power cord (12ga.) and plug; S.S. saw blade wheels for 5/8" (16mm) saw blade, Cast saw blade wheels for 1" (25.4mm) saw blade; Longer S.S. hex (leg) bolts B,C - Double saw guide bar; Left-hand feed; Narrow upper and table guides .018 (.45mm) | | | | | | | | |
| Certifications | N.S.F. • U.L. • U.S.D.A. • C.S.A. | | | | | | | | |
| Weight | Uncrated: 600 lbs. (272kg); Crated: 700 lbs (318kg); Dims. Crated: L 54" (137cm) x W 45" (114cm) x H 83" (211cm) All weights and dimensions are approx. depending on design and options selected | | | | | | | | |
| Legend | FH = fixed head; FS = fish steaking; HDFFT = heavy duty fixed front table; LP = low profile; PGF = precision gauge fence; R = retailing; S.S. = stainless steel | | | | | | | | |



All specifications contained herein are subject to change without notification.

ITEM NO.: LIT-44SSFH-LP-375
FORM NO.: Md 44SSFH-LP-375-10-15-1-B

Phone: (419) 798-4451
Fax: (419) 798-9106

Service is available
from locations worldwide

www.birosaw.com
sales@birosaw.com