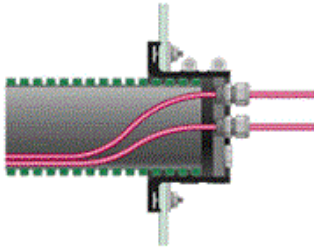
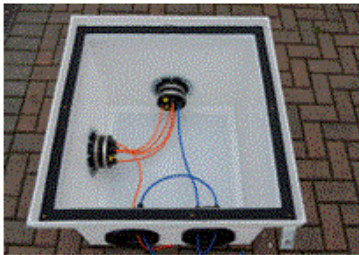


Sealed Testable Duct Systems

Installations where ducts pass from a hazardous area to a safe area, where the passage of water, vermin or vapours is undesirable. A prime example being the passage of fuel vapours through electrical ducts back to the electrical supply cabinet. Our cable entry bulkhead provides a barrier to such transmissions. Individual cables are sealed with suitably rated high quality electrical glands within the bulkhead. Additional spare entries can be sealed for future use with a stop end plugs provided within the kit. Should you wish to run additional cables within the duct these can be quickly and easily installed within the existing capacity within the bulkhead plate. A typical 110 mm duct can accommodate upto 8 off M20 sized cable glands or a mixture of glands to suit your cable types. Within the duct boot a pressure test valve can be fitted to allow the pressure testing of the integrity of the whole duct. A draw-line retainer is also provided on the bulkhead to ensure pulling additional cables



in is a simple operation. Forecourt Solutions provide a customised bulkhead plate service should one of our standard bulkheads not be suitable for your application.



Typical uses

- ◆ CCTV Cabling
- ◆ Containment Chambers
- ◆ Driver Controlled Delivery
- ◆ LPG Installations
- ◆ Lighting Chambers
- ◆ Tank Gauging
- ◆ Data cable networks
- ◆ LV and HV networks

Duct Sizes - Internal/External

- ◆ 32/40 mm
- ◆ 40/50 mm
- ◆ 50/63 mm
- ◆ 75/90 mm
- ◆ 94/110 mm
- ◆ 125/148 mm
- ◆ 137/160 mm
- ◆ 150/188 mm

Forecourt Solutions Ltd

Unit 3, Summerfield Way, Chelston Business Park
Wellington, Somerset, TA21 9JE. UK
W: ForecourtSolutionsLtd.com

