

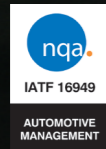
# RGH Rubber & Plastics Ltd

+44 (0)1371 875941  
sales@rghrubber.co.uk  
rghrubber.co.uk

RGH Rubbers and Plastics Ltd, Acorn House,  
Oak Industrial Park, Great Dunmow, Essex CM6 1XN

# RGH Rubber & Plastics Ltd

Automotive Product Guide



Automotive

## Contents

---

04 | Felts & Fabrics

06 | Open Cell Foam

08 | Semi Closed Cell Foam

10 | Closed Cell Foam

12 | Bonding Solutions & 3M Acrylic Foam Tapes

14 | UHMW Tape

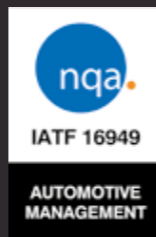
16 | Shoddy Felt/Cotton Waste

18 | Other Products

20 | Packaging Foams & Case Inserts

22 | The Laboratory

22 | Design & Prototype Department





## Felts & Fabrics

RGH specialise in the lamination and conversion of a range of felts and fabrics commonly used between mouldings in order to act as anti-rattle, anti-vibration and anti-squeak pads.

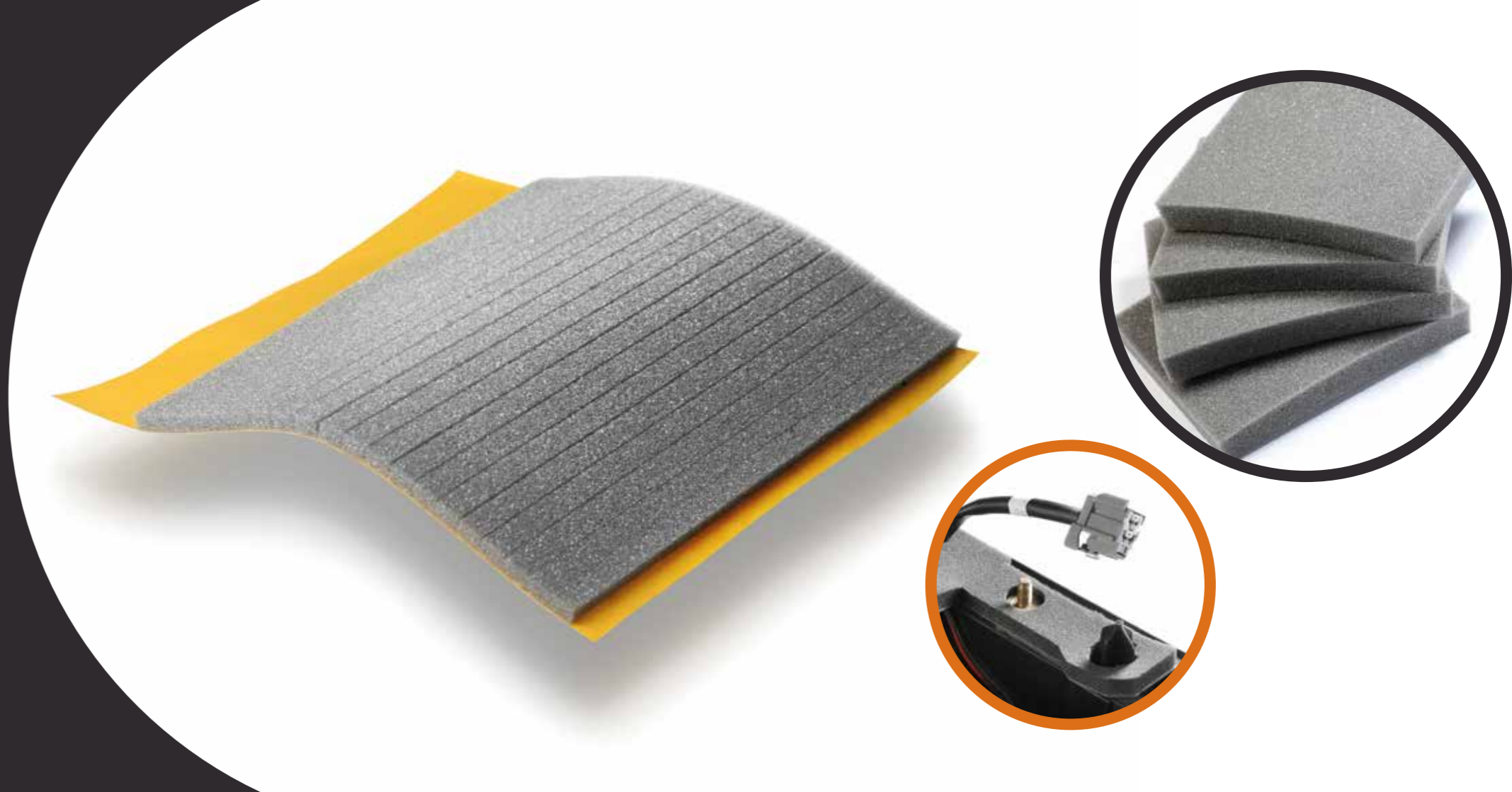
Materials range from 0.1mm thick to 5mm thick and are available in both white and black in order to ensure that visual sensors can identify the materials once placed on to the mouldings.

## Open Cell Foam

Polyurethane foam is an open cell, lightweight yet durable foam that is commonly used for cushioning purposes but also has very good insulation properties that provide protection from heat and noise. Generally low in density has good recovery, good temperature resistance and flame retardancy. Available in grey or white as standard.

### Potential applications include:

- Seat, head rest and armrest fillings
- Sound absorption and vibration dampening
- Carpet backing
- HVAC noise reduction
- Dust seals





## Semi Closed Cell Foam

---

Contains a mixture of both open and closed cells which allows it to compress far more easily than a normal sponge foam. Due to its ability to easily compress it can fill uneven and variable voids.

Available in various thicknesses this material is commonly used as dust, noise and moisture seals.

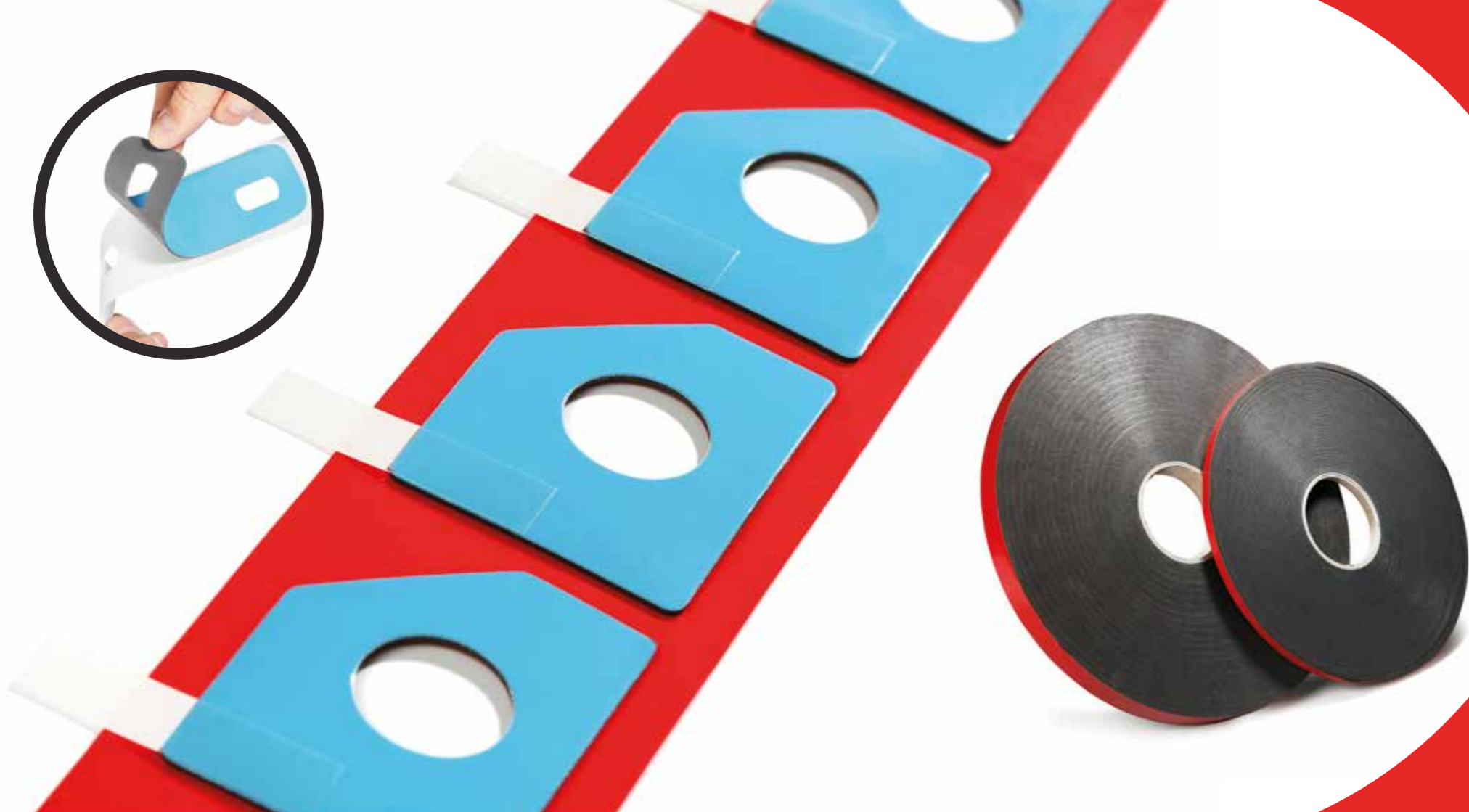
## Closed Cell Foam

Closed cell foams are commonly used for sealing against air or fluids and can also be used to fill voids, use its cushioning properties to lessen the impact between two substrates and some types can also have very good resistance to oils, ozone, weathering, heat and flames.

RGH stock many closed cell foams including:

- EPDM
- Neoprene
- Silicone
- Polyethylene
- PVC nitrile





## Bonding Solutions & 3M Acrylic Foam Tapes

RGH have a range of adhesive tapes and double sided foams suitable for interior and external bonding applications.

3M Acrylic foam tapes remove the need for mechanical fixings and also provide a barrier which seals against any kind of weather. They also withstand the extreme heat and cold, vibration and UV light. RGH work closely with 3M in order to recommend the ideal adhesive to suit your application so whether you are bonding plastics, metals, glass or fabrics RGH will be able to advise the perfect bonding solution.

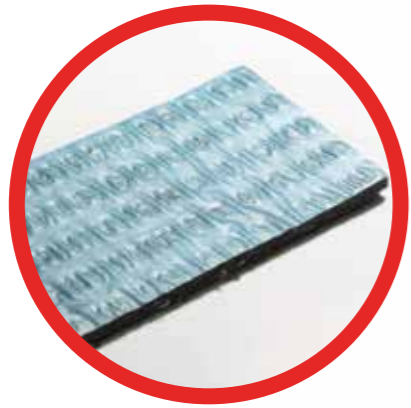
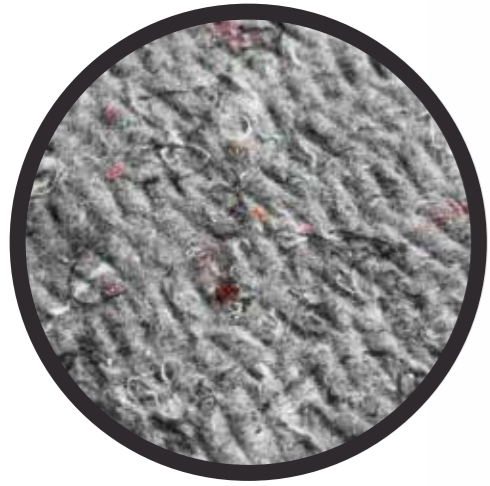
## UHMW Tape

RGH's UHMW Tape not only protects surfaces but it also creates a slipping effect to allow contact between two substrates without wear.

UHMW tape reduces squeaks and promotes movement between two moving parts whilst also reducing rattles and other noises.







## Shoddy Felt / Cotton Waste

---

Shoddy Felt (also known as cotton waste felt) is a recycled material often used in door panels, trunk liners and instrument control padding.

It is a low cost material which is mainly used for sound absorption and sound damping applications. It can be laminated and die cut to shape in order to fulfil your requirements.

## Other Products

- Cable Wrap Tapes
- Die Cut Plastics
- Low Tack Protection Tapes





## Packaging Foams & Case Inserts

RGH design and manufacture custom packaging and case inserts from a wide range of foams to suit.

This form of packaging is greatly used within programmes such as 5S, Kaizen, SMED & Lead improvement teams and can lead to great time saving and financial gains.

RGH's in-house CAD experts will make the design process as simple as possible and help you to create the perfect solution, first time. By using the latest in digital plotter technologies, foam inserts can be made from one solid piece of foam, rather than laminating multiple sheets of foam together. RGH can mill foams to different depths giving you an extremely accurate and solid packing piece. The service that is provided not only helps to securely protect your products but also helps to present them in a professional and stylish manner.

Prototype parts can be built prior to production to ensure that you are totally satisfied with your product.

## The Laboratory

RGH's in-house laboratory allows for materials to be tested to insure that they are manufactured to the correct specification.

Dimensions are checked to be within specified tolerances and tests can be conducted to give confidence that the product will successfully adhere to the substrate that you require. If materials are difficult to stick to then RGH encourage customers to send these materials to the laboratory for testing before production commences. This gives peace of mind that the product and adhesive that is offered will do the job that you need.

Testing capabilities include tensile and compression tests, peel, shear, tear and cyclic, all within a controlled environment.

## Design & Prototype Department

RGH's CAD and design team will help you devise the perfect solution for your application. Whether you need to eliminate unwanted noise, secure a product in place, create a spacer gasket or simply bond two products together, RGH's design team will work around the clock to help you design a component to fulfil your needs. Once the component is designed, the design will be passed to the prototyping department in order to produce a rapid prototype. This enables you to see and apply a finished component before moving on to full production, also eliminating the need to buy tooling just to see whether the design and specification of the material is correct. Modifications can then be made until the perfect solution is created.

