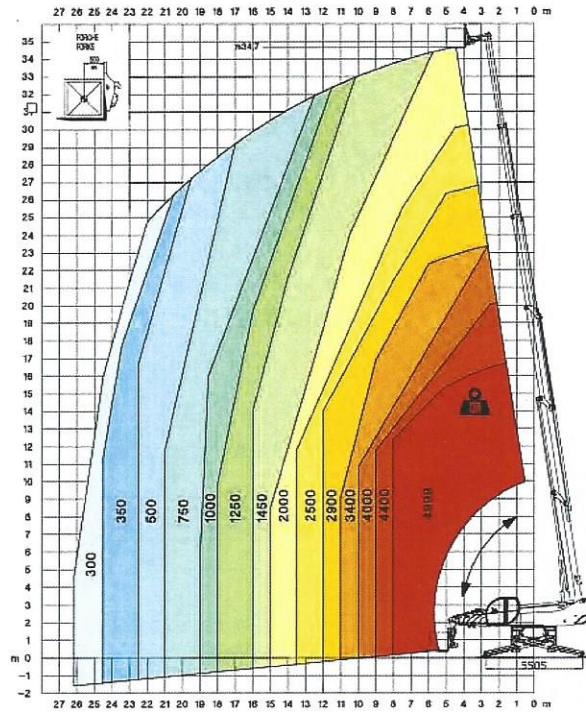


MAGNI
TELESCOPIC HANDLERS

RTH5.35



Preliminary

MACHINE MODEL	Rotating telescopic handler	RTH 5.35
	Maximum lifting capacity	4.999 kg (center of gravity 500 mm)
	Maximum lifting height	34,7 m
ENGINE	Type	Mercedes OM 934 LA 4 Final
	Rated power	170 KW - 231 HP at 2.200 rpm
	Maximum torque	900 Nm at 1.400 rpm
	Displacement	5,13 l
	Cylinders	4 in line
	Fuel	Diesel direct injection turbocharged
	Cooling system	Water – intercooler
TRANSMISSION	Type	Hydrostatic
	Model	Bosch – Rexroth
	Maximum pressure	500 bar
	Displacements	Variable displacement pump (displacement max 125 cc/r) electronically controlled Variable displacement motor (displacement max 150 cc/r)
	Gear box	2 speeds (4,06-1,43) forward-reverse
WEIGHTS	Total unladen	23.500 kg
	Front axle unladen (boom retracted and lowered)	12.000 kg
	Rear axle unladen (boom retracted and lowered)	11.500 kg
TANKS CAPACITIES	Fuel tank	280 l
	AdBlue	40 l
	Hydraulic oil tank	210 l
	Engine oil	16 l
	Cooling liquid	20 l

